

**COME HOME Colon Cancer pathway V7 April, 2015**

Cancer type: Colon

**Diagnostic Workup:**

- |   |   |
|---|---|
| • Pathology Review                            | All patients  |
| • H&P   | All patients  |
| • Colonoscopy                                 | All patients  |
| • CBC, Chemistry Profile, CEA                 | All Patients  |
| • Abdominal/Pelvic CT                         | All Patients  |
| • Chest imaging (PET-CT, diagnostic CT, XRAY) | All Patients  |
| • KRAS  | Patients with Stage 4                                       |
| • BRAF  | Patients with Stage 4                                       |
| • NRAS  | Patients with Stage 4                                       |
| • Biopsy of mets                              | Patients with suspected metastatic disease                  |
| • PET-CT                                      | Patients with potentially resectable disease                |
| • Family history                              | All Patients  |
| • MSI testing                                 | Patients with stage II disease or meeting Bethesda criteria |
| • UGT1A1                                      | Optional  |

**Bethesda Criteria:**

- Age < 50 at diagnosis
- Pt has synchronous or metachronous colorectal or other HNPCC-related tumors (colorectal, endometrial, stomach, ovarian, pancreas, bladder, ureter and renal pelvis, biliary tract, brain (usually glioblastoma as seen in Turcot Syndrome), sebaceous gland adenomas and keratoacanthomas in Muir-Torre syndrome, and carcinoma of the small bowel)
- Pt has colorectal cancer and one or more first-degree relatives were diagnosed with HNPCC-related tumor before the age of 50.
- Pt has colorectal cancer and two or more first degree relatives were diagnosed with HNPCC-related tumor at any age

## Stage I

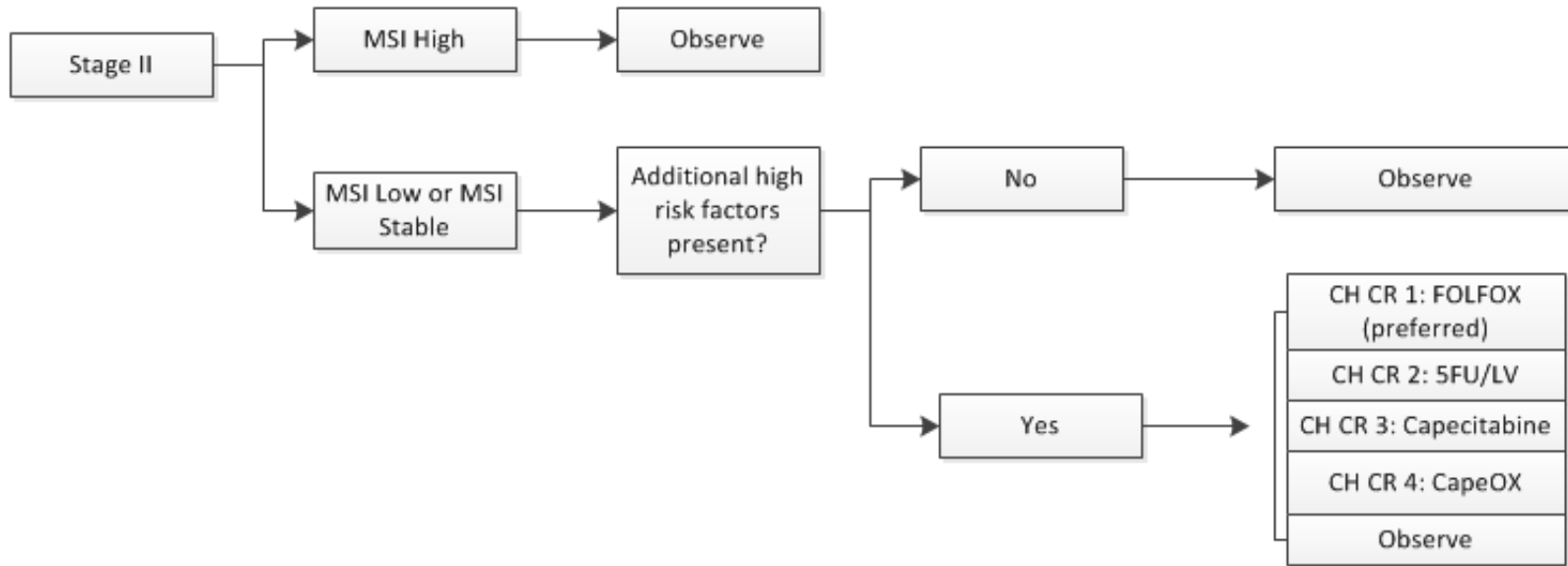
Patients will receive surveillance CEA testing every 6 months for 3 years and then yearly. Colonoscopy at one year, then after first year follow per guidelines.

## Stage II

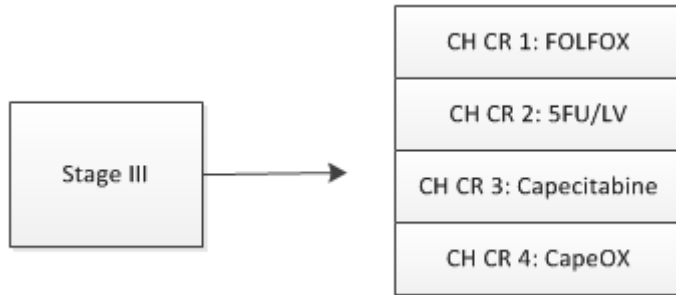
Stage II patients will be evaluated for risk of recurrence. Indicators of high risk include:

- T4 (stage IIB/IIC)
- Poor differentiation
- < 12 lymph nodes, recommend review by a second pathologist
- Bowel obstruction
- Lesions with localized perforation
- Close, indeterminate, or positive margins
- Histopathologic features that are considered prognostic: grade, lymphovascular invasion, signet-ring cell features
- Oncotype/gene expression signature tests

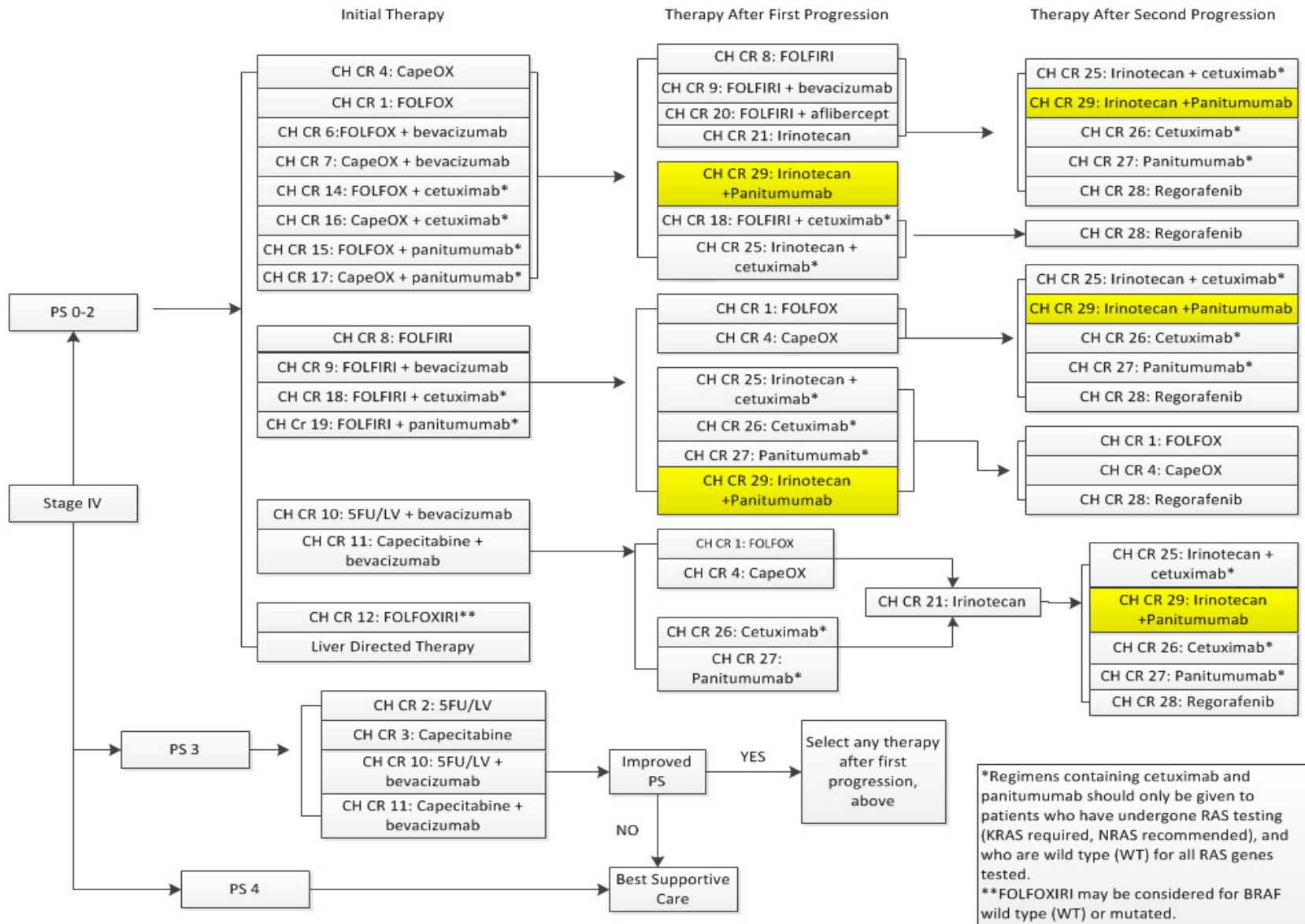
Stage II:



**Stage III:**



Stage IV:



**CH CR 1: FOLFOX**

Oxaliplatin 85 mg/m<sup>2</sup> IV day 1  
 Leucovorin 400 mg/m<sup>2</sup> IV day 1  
 5FU 400 mg/m<sup>2</sup> IV bolus on day 1 then 1200 mg/m<sup>2</sup>/day x 2 days CIVI  
 Repeat every 2 weeks

**CH CR 2: 5FU/LV**

Leucovorin 500 mg/m<sup>2</sup> IV days 1, 8, 15, 22, 29 and 36  
 5-FU 500 mg/m<sup>2</sup> IV bolus 1 hour after start of leucovorin days 1, 8, 15, 22, 29, 36  
 Repeat every 8 weeks

**CH CR 3: Capecitabine**

850-1250 mg/m<sup>2</sup> PO twice daily, days 1-14  
 Repeat every 3 weeks

**CH CR 4: CapeOX**

Oxaliplatin 130 mg/m<sup>2</sup> IV over 2 hours day 1  
 Capecitabine 850-1000 mg/m<sup>2</sup> twice daily PO for 14 days  
 Repeat every 3 weeks

**CH CR 5: FLOX** This regimen was removed.

~~5-FU 500mg/m<sup>2</sup> IV bolus weekly x6  
 Leucovorin 500mg/m<sup>2</sup> IV weekly x6  
 Each 8 week cycle x3 with oxaliplatin 85mg/m<sup>2</sup> IV administered on weeks 1,3 & 5 of each 8 week cycle x3~~

**CH CR 6: FOLFOX + bev**

Oxaliplatin 85 mg/m<sup>2</sup> IV day 1  
 Leucovorin 400 mg/m<sup>2</sup> IV day 1  
 5FU 400 mg/m<sup>2</sup> IV bolus on day 1 then 1200 mg/m<sup>2</sup>/day x 2 days CIVI  
 Bevacizumab 5 mg/kg IV, day 1  
 Repeat every 2 weeks

**CH CR 7: CapeOX + bev**

Oxaliplatin 130 mg/m<sup>2</sup> IV over 2 hours day 1  
 Capecitabine 850-1000 mg/m<sup>2</sup> twice daily PO for 14 days  
 Bevacizumab 7.5 mg/kg IV day 1  
 Repeat every 3 weeks

**CH CR 8: FOLFIRI**

Irinotecan 180 mg/m<sup>2</sup> IV day 1  
Leucovorin 400 mg/m<sup>2</sup> IV day 1  
5-FU 400 mg/m<sup>2</sup> IV bolus day 1, then 1200 mg/m<sup>2</sup>/day x 2 days CIVI  
Repeat every 2 weeks

**CH CR 9: FOLFIRI + bev**

Irinotecan 180 mg/m<sup>2</sup> IV day 1  
Leucovorin 400 mg/m<sup>2</sup> IV day 1  
5-FU 400 mg/m<sup>2</sup> IV bolus day 1, then 1200 mg/m<sup>2</sup>/day x 2 days CIVI  
Bevacizumab 5 mg/kg IV, day 1  
Repeat every 2 weeks

**CH CR 10: 5FU/LV + bev**

Leucovorin 500 mg/m<sup>2</sup> IV days 1, 8, 15, 22, 29 and 36  
5-FU 500 mg/m<sup>2</sup> IV bolus 1 hour after start of leucovorin days 1, 8, 15, 22, 29, 36  
Repeat every 8 weeks  
Bevacizumab 5 mg/kg IV day 1  
Repeat every 2 weeks

**CH CR 11: Cape + bev**

850-1250 mg/m<sup>2</sup> PO twice daily, days 1-14  
Bevacizumab 7.5 mg/kg IV day 1  
Repeat every 3 weeks

**CH CR 12: FOLFOXIRI**

Irinotecan 165 mg/m<sup>2</sup> IV day 1  
Oxaliplatin 85 mg/m<sup>2</sup> day 1  
Leucovorin 400 mg/m<sup>2</sup> day 1  
5FU 1600 mg/m<sup>2</sup>/day x 2 days CIVI  
Repeat every 2 weeks

**CH CR 13: FOLFOXIRI + bev** This regimen was removed.

~~Irinotecan 165 mg/m<sup>2</sup> IV day 1  
Oxaliplatin 85 mg/m<sup>2</sup> day 1  
Leucovorin 400 mg/m<sup>2</sup> day 1  
5FU 1600 mg/m<sup>2</sup>/day x 2 days CIVI  
Bevacizumab 5 mg/kg day 1  
Repeat every 2 weeks~~

**CH CR 14: FOLFOX + panitumumab**

Oxaliplatin 85 mg/m<sup>2</sup> IV day 1  
 Leucovorin 400 mg/m<sup>2</sup> IV day 1  
 5FU 400 mg/m<sup>2</sup> IV bolus on day 1 then 1200 mg/m<sup>2</sup>/day x 2 days CIVI  
 Panitumumab 6 mg/kg IV day 1  
 Repeat every 2 weeks

**CH CR 15: FOLFOX + cetuximab**

Oxaliplatin 85 mg/m<sup>2</sup> IV day 1  
 Leucovorin 400 mg/m<sup>2</sup> IV day 1  
 5FU 400 mg/m<sup>2</sup> IV bolus on day 1 then 1200 mg/m<sup>2</sup>/day x 2 days CIVI  
 Repeat every 2 weeks  
 Cetuximab 400 mg/m<sup>2</sup> IV over 2 hours first infusion, then 250 mg/m<sup>2</sup> IV over 60 min weekly  
 OR  
 Cetuximab 500 mg/m<sup>2</sup> IV over 2 hours, day 1, every 2 weeks

**CH CR 16: CapeOX + cetuximab**

Oxaliplatin 130 mg/m<sup>2</sup> IV over 2 hours day 1  
 Capecitabine 850-1000 mg/m<sup>2</sup> twice daily PO for 14 days  
 Repeat every 3 weeks  
 Cetuximab 400 mg/m<sup>2</sup> IV over 2 hours first infusion, then 250 mg/m<sup>2</sup> IV over 60 min weekly  
 OR  
 Cetuximab 500 mg/m<sup>2</sup> IV over 2 hours, day 1, every 2 weeks

**CH CR 17: CapeOX + panitumumab**

Oxaliplatin 130 mg/m<sup>2</sup> IV over 2 hours day 1  
 Capecitabine 850-1000 mg/m<sup>2</sup> twice daily PO for 14 days  
 Repeat every 3 weeks  
 Panitumumab 6 mg/kg IV day 1  
 Repeat every 2 weeks

**CH CR 18: FOLFIRI + cetuximab**

Irinotecan 180 mg/m<sup>2</sup> IV day 1  
 Leucovorin 400 mg/m<sup>2</sup> IV day 1  
 5-FU 400 mg/m<sup>2</sup> IV bolus day 1, then 1200 mg/m<sup>2</sup>/day x 2 days CIVI  
 Repeat every 2 weeks  
 Cetuximab 400 mg/m<sup>2</sup> IV over 2 hours first infusion, then 250 mg/m<sup>2</sup> IV over 60 min weekly  
 OR  
 Cetuximab 500 mg/m<sup>2</sup> IV over 2 hours, day 1, every 2 weeks



**CH CR 19: FOLFIRI +panitumumab**

Irinotecan 180 mg/m<sup>2</sup> IV day 1  
 Leucovorin 400 mg/m<sup>2</sup> IV day 1  
 5-FU 400 mg/m<sup>2</sup> IV bolus day 1, then 1200 mg/m<sup>2</sup>/day x 2 days CIVI  
 Panitumumab 6 mg/kg IV day 1  
 Repeat every 2 weeks

**CH CR 20: FOLFIRI + aflibercept**

Irinotecan 180 mg/m<sup>2</sup> IV day 1  
 Leucovorin 400 mg/m<sup>2</sup> IV day 1  
 5-FU 400 mg/m<sup>2</sup> IV bolus day 1, then 1200 mg/m<sup>2</sup>/day x 2 days CIVI  
 Ziv-aflibercept 4 mg/kg IV  
 Repeat every 2 weeks

**CH CR 21: Irinotecan**

Irinotecan 125 mg/m<sup>2</sup> IV days 1 and 8  
 Repeat every 3 weeks

**CH CR 22: FOLFOX then Irino**

~~Oxaliplatin 85 mg/m<sup>2</sup> IV day 1  
 Leucovorin 400 mg/m<sup>2</sup> IV day 1  
 5FU 400 mg/m<sup>2</sup> IV bolus on day 1 then 1200 mg/m<sup>2</sup>/day x 2 days CIVI  
 Repeat every 2 weeks  
 Followed by (2-3 weeks):  
 Irinotecan 125 mg/m<sup>2</sup> IV days 1 and 8  
 Repeat every 3 weeks~~

**CH CR 23: CapeOX then Irino**

~~Oxaliplatin 130 mg/m<sup>2</sup> IV over 2 hours day 1  
 Capecitabine 850-1000 mg/m<sup>2</sup> twice daily PO for 14 days  
 Repeat every 3 weeks  
 Followed by (2-3 weeks):  
 Irinotecan 125 mg/m<sup>2</sup> IV days 1 and 8  
 Repeat every 3 weeks~~

**CH CR 24: Irinotecan + Oxaliplatin** This regimen was removed.

~~Irinotecan 125 mg/m<sup>2</sup> IV days 1 and 8  
 Oxaliplatin 130 mg/m<sup>2</sup> IV day 1  
 Repeat every 3 weeks~~

**CH CR 25: Irinotecan + cetuximab**

Irinotecan 125 mg/m<sup>2</sup> IV days 1 and 8

Repeat every 3 weeks

Cetuximab 400 mg/m<sup>2</sup> first infusion, then 250 mg/m<sup>2</sup> IV weekly

OR

Cetuximab 500 mg/m<sup>2</sup> IV over 2 hours day 1, every 2 weeks

**CH CR 26: Cetuximab**

Cetuximab 400 mg/m<sup>2</sup> first infusion, then 250 mg/m<sup>2</sup> IV weekly

OR

Cetuximab 500 mg/m<sup>2</sup> IV over 2 hours day 1, every 2 weeks

**CH CR 27: Panitumumab**

Panitumumab 6 mg/kg IV day 1

Repeat every 2 weeks

**CH CR 28: Regorafenib**

Regorafenib 120-160 mg PO daily days 1-21

Repeat every 28 days

**CH CR 29: Irinotecan + panitumumab**

Irinotecan 125 mg/m<sup>2</sup> IV days 1 and 8

Repeat every 3 weeks

Or

Irinotecan 300–350mg/m<sup>2</sup> IV, day 1

Repeat cycle every 3 weeks.

Panitumumab 6mg/kg IV , day 1

repeat every 2 weeks