

COME HOME Hodgkin Lymphoma pathway development worksheet, v8 February 27, 2015

Cancer type: Hodgkin Lymphoma

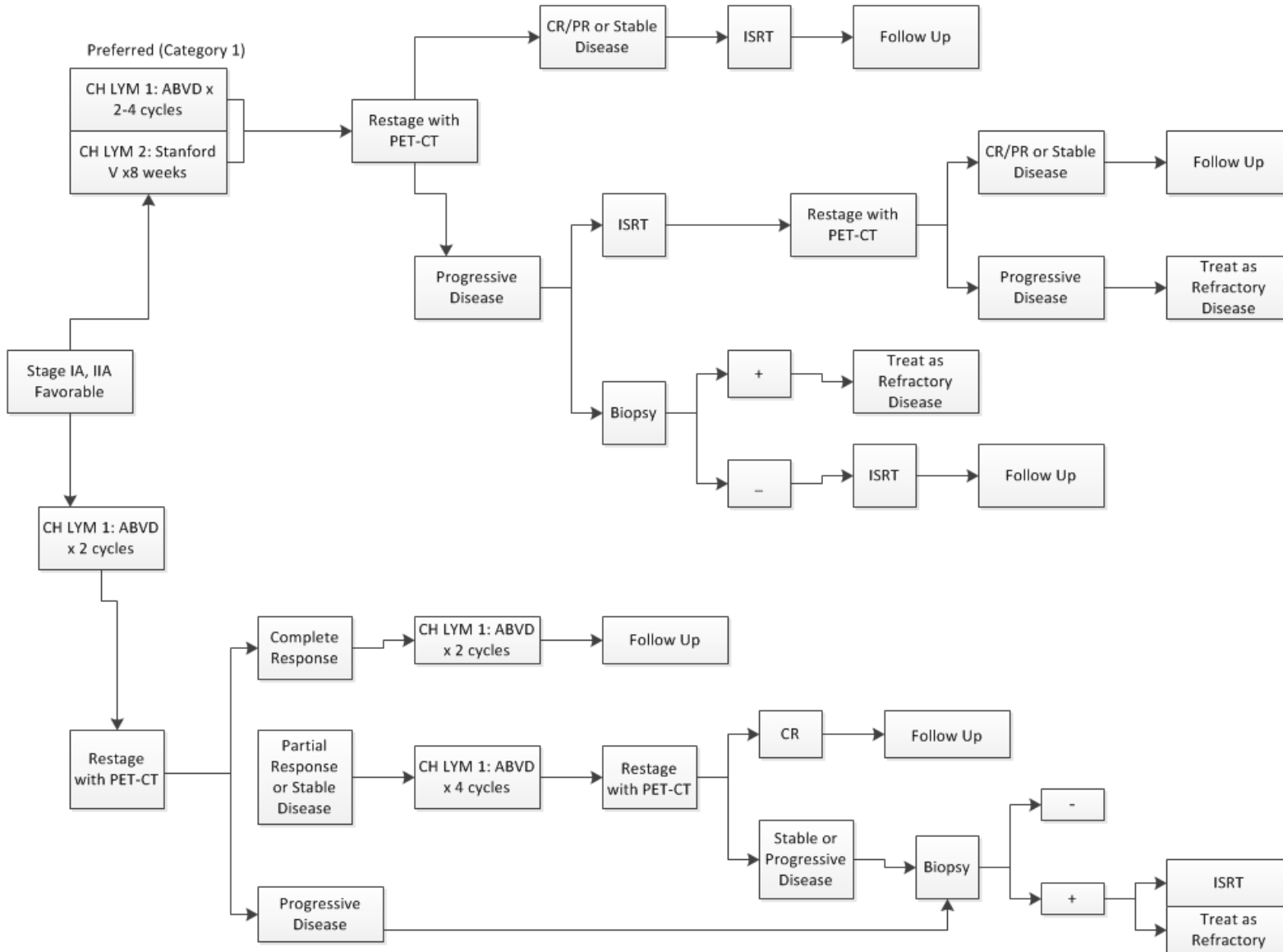
1. Please fill out the following table to describe any tests that are run in conjunction with a new or recurring diagnosis of the above cancer type. Feel free to add tests you routinely perform that have not been included here.

Test Name (CT, MRI, KRAS, etc.)	Patient Population	Notes
H&P including B symptoms	All	
CBC, differential, platelets	All	
LDH, LFT, albumin	All	
BUN, creatinine	All	
ESR	All	
Pregnancy test	Women of childbearing age	
PET +/- diagnostic or low dose CT of chest abdomen and pelvis	All	
Bone Marrow Biopsy	Potential transplant patients	
Baseline evaluation of ejection fraction	Doxorubicin-containing regimens	
Fertility preservation	Where applicable	
Baseline PFTs	If ABVD or BEACOPP used	**Continued discussion- How frequently are PFTs being done.
Documentation of Pneumococcal, H-flu, meningococcal vaccine	If splenic RT considered	
HIV Test	Optional	** No data on last call 9/26/14. Data will be presented on HIV testing utilization as it becomes available.

Classical Hodgkin Lymphoma

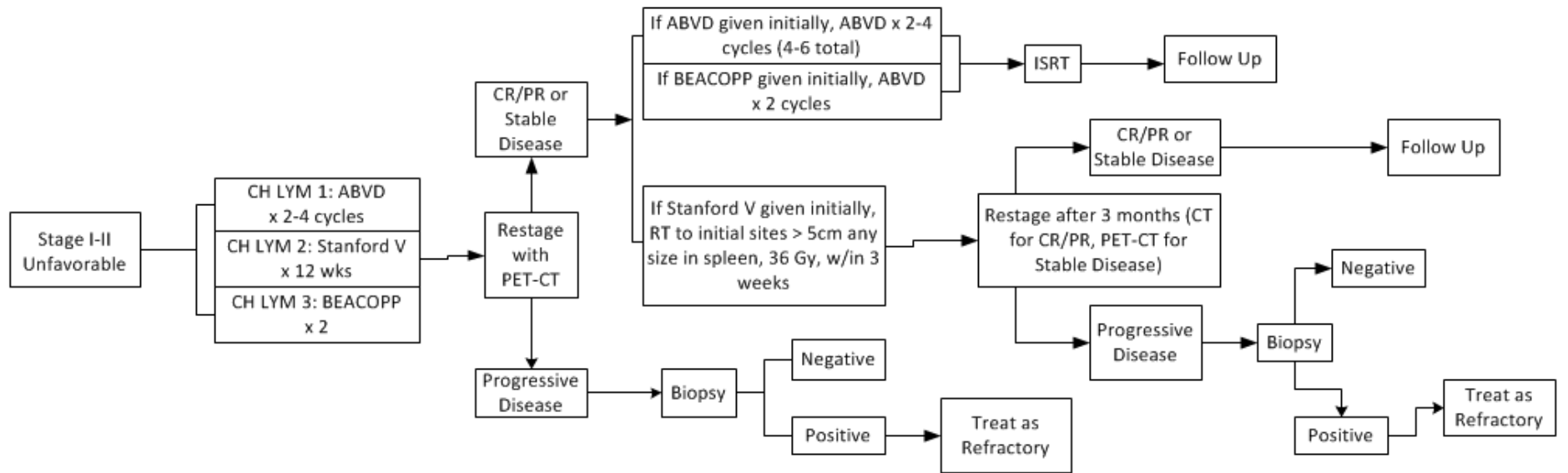
Stage IA, IIA, Favorable

Favorable criteria: no bulky mediastinal disease, ≤ 10 cm disease, no B symptoms, ESR ≤ 50 , ≤ 3 sites of disease



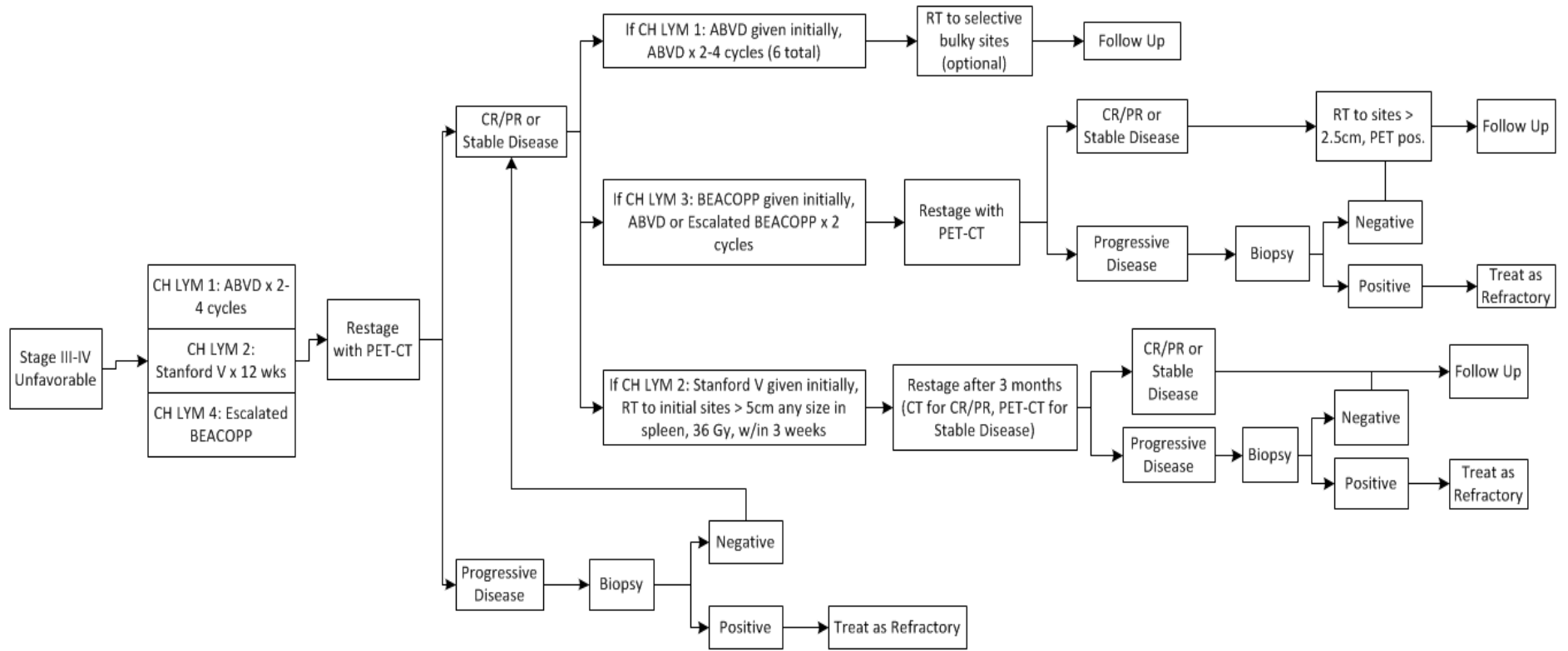
Classical Hodgkin Lymphoma

Stage I-II Unfavorable



Classical Hodgkin Lymphoma

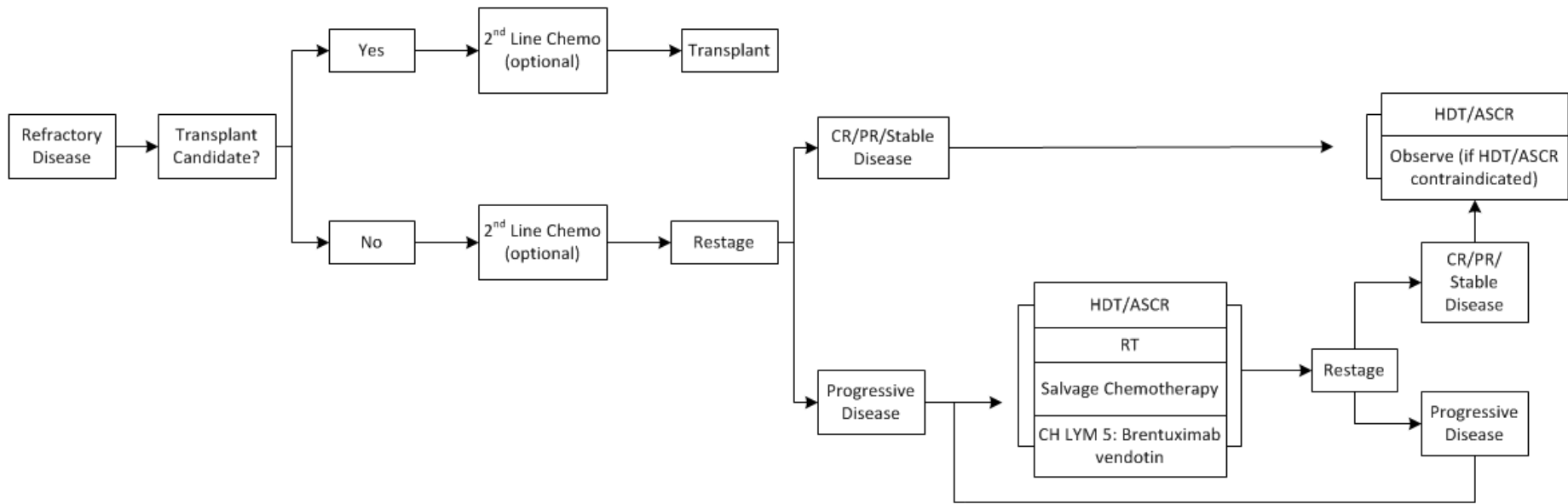
Stage III-IV Unfavorable



Survival Criteria: Follow-up after completion of treatment up to 5 years:

1. History & Physical every 2-4 mo for 1-2 years, then every 3-6 months for next 3-5 years
2. Annual influenza vaccine
3. CBC, platelets, ESR (if elevated at time of diagnosis) every 2-4 mo for 1-2 years, then every 3-6 months for next 3-5 years
4. TSH at least annually if RT to neck
5. Chest x-ray or CT as clinically indicated.
6. Abdominal/pelvic CT as clinically indicated.
7. Counseling: reproduction, health habits, psychosocial, cardiovascular, breast self-exam, skin cancer risk, end-of-treatment discussion
8. Surveillance PET should not be done routinely due to risk for false positives. Management decision should not be based on PET scan alone, clinical or pathological correlation is needed.

Refractory Classical Hodgkin Lymphoma (Transplant vs. Non-Transplant)



Second Line/Salvage Chemotherapy Regimens:

CH LYM 6: Bendamustine

CH LYM 5: Brentuximab

CH CLYM 7: ChIVPP (chorambucil, vinblastine, procarbazine, prednisone)

CH LYM: 9: C-MOPP (cyclophosphamide, vincristine, procarbazine, prednisone)

CH LYM 10: DHAP (dexamethasone, cisplatin, high-dose cytarabine)

CH LYM 12: ESHAP (etoposide, methylprednisolone, high-dose cytarabine and cisplatin)

CH LYM 13: GCD (gemcitabine, carboplatin, dexamethasone)

CH LYM 14: GVD (gemcitabine, vinorelbine, liposomal doxorubicin)

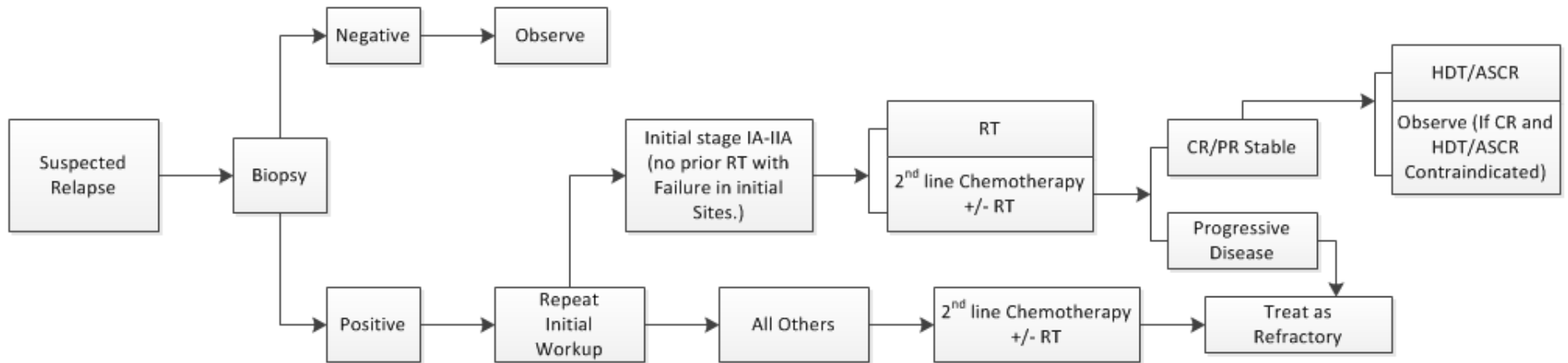
CH LYM 15: ICE (ifosfamide, carboplatin, etoposide)

CH LYM 16: IGEV (ifosfamide, gemcitabine, vinorelbine)

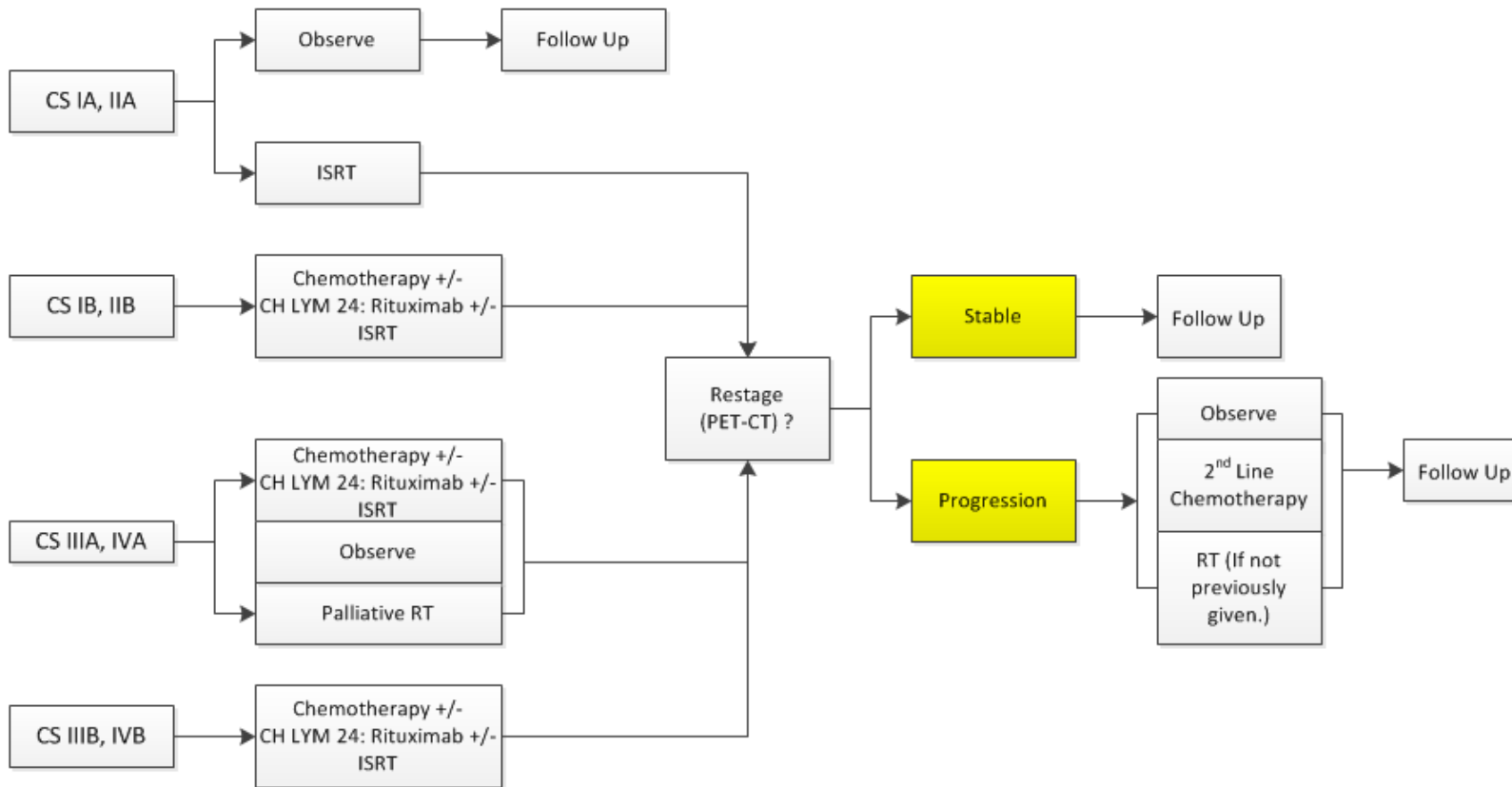
CH LYM 17: Mini-BEAM (carmustine, cytarabine, etoposide, melphalan)

CH LYM 18: MINE (etoposide, ifosfamide, mesna, mitoxantrone)

Suspected Relapse Classical Hodgkin Lymphoma



Lymphocyte Predominant Hodgkin Lymphoma (LPHL)



Chemotherapy Regimens:

CH LYM 20: ABVD +/- rituximab

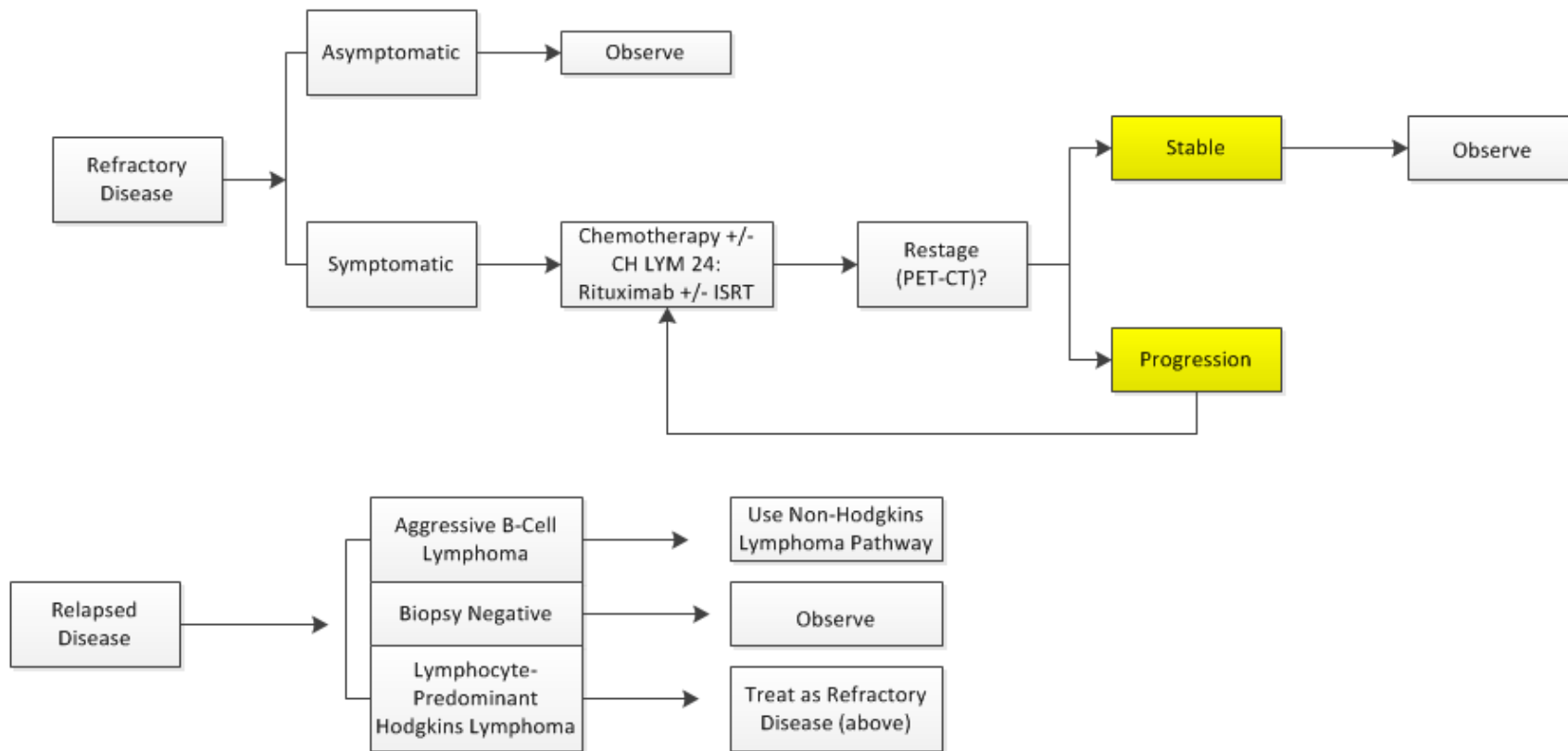
CH LYM 21: CHOP +/- rituximab

CH LYM 22: CVP +/- rituximab

CH LYM 23: EPOCH +/- rituximab

CH LYM 24: Single-agent rituximab

Lymphocyte Predominant Hodgkin Lymphoma (LPHL) - Second Line Therapy



COME HOME Hodgkin Lymphoma Regimens:

CH LYM 1: ABVD

Doxorubicin 25 mg/m²
Bleomycin 10 units/m²
Vinblastine 6 mg/m²
Dacarbazine 375 mg/m² on days 1 and 15
Given every 28 days for 2 to 6 cycles

CH LYM 2: Stanford V

Doxorubicin 25 mg/m²; Vinblastine 6 mg/m² days 1 and 15;
Mechlorethamine 5 mg/m² day 1;
Vincristine 1.4 mg/m² and bleomycin 5 mg/m² days 8 and 22;
Etoposide 60 mg/m² days 15, 16;
Prednisone PO 40 mg/m² q2d;
Repeat every 28 days for two to four cycles

CH LYM 3: BEACOPP

Bleomycin 10 mg/m² and Vincristine 1.4 mg/m² day 8;
Etoposide 100 mg/m² days 1-3;
Doxorubicin 25 mg/m² and cyclophosphamide 650 mg/m² day 1;
Procarbazine 100 mg/m² PO days 1-7;
Prednisone 40 mg/m² PO days 1-14;
Repeat every 21 days

CH LYM 4: Escalated BEACOPP

Bleomycin 10 mg/m² and Vincristine 1.4 mg/m² day 8;
Etoposide 200 mg/m² days 1-3;
Doxorubicin 35 mg/m² and cyclophosphamide 1250 mg/m² day 1;
Procarbazine 100 mg/m² PO days 1-7;
Prednisone 40 mg/m² PO days 1-14;
Repeat every 21 days

CH LYM 5: Brentuximab Vedotin

1.8 mg/kg day 1, repeat every 21 days

CH LYM 6: Bendamustine

100 mg/m² days 1 and 2, repeat every 28 days

CH LYM 7: ChIVPP (chlorambucil, vinblastine, procarbazine, prednisone)

Vinblastine 6 mg/m² days 1 and 8;
Chlorambucil 6 m/m² PO days 1-14;
Procarbazine 100 mg/m² PO days 1-14;
Prednisone 40 mg/m² PO days 1-14;
Repeat every 28 days

CH LYM 8: CHOP

Cyclophosphamide 750 mg/m² day 1;
Doxorubicin 50 mg/m² day 1;
Vincristine 1.4 mg/m² day 1;
Prednisone 40 mg/m² PO days 1-5;
Repeat every 21 days

CH LYM 9: C-MOPP (cyclophosphamide, vincristine, procarbazine, prednisone)

Vincristine 1.4 mg/m² days 1 and 8;
Cyclophosphamide 650 m/m² days 1 and 8;
Procarbazine 100 mg/m² PO days 1-14;
Prednisone 40 mg/m² PO days 1-14;
Repeat every 28 days

CH LYM 10: DHAP (dexamethasone, cisplatin, high-dose cytarabine)

Cisplatin 100 mg/m² day 1;
Cytarabine 2 g/m² 12houly for 2 doses day 2;
Dexamethasone 40 mg/m² PO days 1-4;
Repeat every 21-28 days;

CH LYM 11: EPOCH

Etoposide (VP-16) 50 mg/m²/d civi d1-4
Prednisone 60 mg/m²/d po d1-5
Vincristine 0.4 mg/m²/d civi d1-4
Doxorubicin (Adriamycin) 10 mg/m²/d civi d1-4
Cyclophosphamide (Cytosan) 750 mg/m² iv over 15 min d5
Bactrim DS 1 tablet po bid tiw
Repeat every 21 days

CH LYM 12: ESHAP (etoposide, methylprednisolone, high-dose cytarabine and cisplatin)

Etoposide (VP-16) 40 mg/m²/d iv over 1 hr d1-4

Methylprednisolone 500 mg/d iv over 15 min d1-5

Cisplatin (CDDP) 25 mg/m²/d civi d1-4

Cytarabine (Ara-C) 2000 mg/m² iv over 2 hr d5

Q3-4w x 6-8 cycles

CH LYM 13: GCD (gemcitabine, carboplatin, dexamethasone)

Gemcitabine (Gemzar) 1000 mg/m² iv d1, 8

Carboplatin AUC 2 d1, 8

Pegylated liposomal doxorubicin (Doxil) 15 mg/m² iv d1, 8

Repeat every 21 days

CH LYM 14: GVD (gemcitabine, vinorelbine, liposomal doxorubicin)

Gemcitabine (Gemzar) 1000 mg/m² iv d1, 8

Vinorelbine (Navelbine) 20 mg/m² iv d1, 8

Pegylated liposomal doxorubicin (Doxil) 15 mg/m² iv d1, 8

Repeat every 21 days

CH LYM 15: ICE (ifosfamide, carboplatin, etoposide)

Ifosfamide 1000 mg/m²/d iv over 1 h d1-2 (hours 0 and 1)

Etoposide (VP-16) 150 mg/m²/d iv over 11 hrs after ifosfamide d1-2 (hours 1-11)

Carboplatin (Paraplatin) 200 mg/m²/d iv over 1 h after etoposide d1-2 (hours 11-12)

Etoposide (VP-16) 150 mg/m²/d iv over 11 hrs after carboplatin d1-2 (hours 12-24)

Mesna 333 mg/m² iv 30 minutes before ifosfamide, repeat 4 and 8 hrs after ifosfamide

Repeat every 28 days

ICE (ifosfamide, carboplatin, etoposide)- Given in outpatient setting every 2 weeks

Ifosfamide 1.66 gm/mP^{2P} IV daily x 3 days

Etoposide 100 mg/mP^{2P} IV daily x 3 days

Carboplatin AUC 5 IV day 2 only

Mesna 1.66 gm/mP^{2P} IV daily x 3 days

Given every 14 days for 4 cycles.

CH LYM 16: IGEV (ifosfamide, gemcitabine, vinorelbine)

Ifosfamide 2000 mg/m² days 1-4;

Gemcitabine 800 mg/m² day 1 and 4;

Vinorelbine 20 mg/m² day 1

Repeat every 28 days;

CH LYM 17: Mini-BEAM (carmustine, cytarabine, etoposide, melphalan)

Carmustine 60 mg/m² day 1;

Etoposide 100 mg/m² days 2-4;

Cytarabine 150 mg/m² q12hourly days 2-4;

Melphalan 30 gm/m² day 5;

Repeat every 21 to 80 days

CH LYM 18: MINE (etoposide, ifosfamide, mesna, mitoxantrone)

Mesna 1330 mg/m²/d iv over 1 hr with ifosfamide d1-3, then 500 mg po 4 hrs after ifosfamide d1-3

Ifosfamide 1330 mg/m²/d iv over 1 hr d1-3

Mitoxantrone (Novantrone) 8 mg/m² iv d1

Etoposide (VP-16) 65 mg/m²/d iv over 1 hr d1-3

Repeat every 21 days

CH LYM 19: VIM-D (etoposide, ifosfamide, mitoxantrone, desamethasone)

Use local regimen

CH LYM 20: ABVD + rituximab

Doxorubicin 25 mg/m²; bleomycin 10 units/m²

vinblastine 6 mg/m²

dacarbazine 375 mg/m² on days 1 and 15

rituximab 375 mg/m² day 1

Given every 28 days for 2 to 6 cycles

CH LYM 21: RCHOP

Cyclophosphamide 750 mg/m² day 1;

Doxorubicin 50 mg/m² day 1;

Vincristine 1.4 mg/m² day 1;

Prednisone 40 mg/m² PO days 1-5;

Rituximab 375 mg/m² day 1;

Repeat every 21 days

CH LYM 22: CVP + rituximab

Rituximab (Rituxan) 375 mg/m² iv d1

Cyclophosphamide (Cytoxan) 750 mg/m² iv d1

Vincristine 1.4 mg/m² (max 2 mg) iv d1

Prednisone 40 mg/m² po qd d1-5

Repeat every 21 days

CH LYM 23: EPOCH + rituximab

Etoposide (VP-16) 50 mg/m²/d civi d1-4

Prednisone 60 mg/m²/d po d1-5

Vincristine 0.4 mg/m²/d civi d1-4

Doxorubicin (Adriamycin) 10 mg/m²/d civi d1-4

Cyclophosphamide (Cytoxan) 750 mg/m² iv over 15 min d5

Rituximab 375 mg/m² day 1

Bactrim DS 1 tablet po bid tiw

Repeat every 21 days

CH LYM 24: Rituximab (Given for LPHL)

Rituximab 375 mg/m² day 1;

Repeat every 21 days