

COME HOME Melanoma Pathway, v7 February 9, 2015

Required Structured Data:

- Stage
- Staging Components
- Staging Date
- Performance Status
- Treatment Type (Neoadjuvant, Adjuvant, Etc.)
- Treatment Intent (Curative, Palliative, Maintenance, Etc.)
- Reason for Discontinuing Therapy

Quality Measure(s):

- Staging (clinical or pathologic) entered within one month (31 days) of first visit.

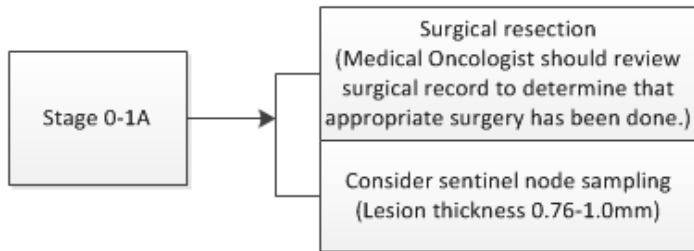
Required diagnostic events:

- | | |
|---|--|
| • History & Physical | All patients within one week of first visit |
| • Performance status | All patients before they receive treatment |
| • Stage 4 diagnosis: Document as Pathologic Stage 4 | All Stage IV patients |
| • Complete skin exam | All patients |
| • Assessment of melanoma risk factors (family/personal hx, atypical moles, dysplastic nevi) | All patients |
| • Baseline imaging (CT, PET/CT or MRI) | All Stage III or IV, Symptomatic Stage I or II |
| • FNA (preferred) or biopsy with suspicious lymph node as part of staging | All patients |
| • Biopsy- For proven diagnosis | All patients |
| • BRAF | All Stage IV patients |

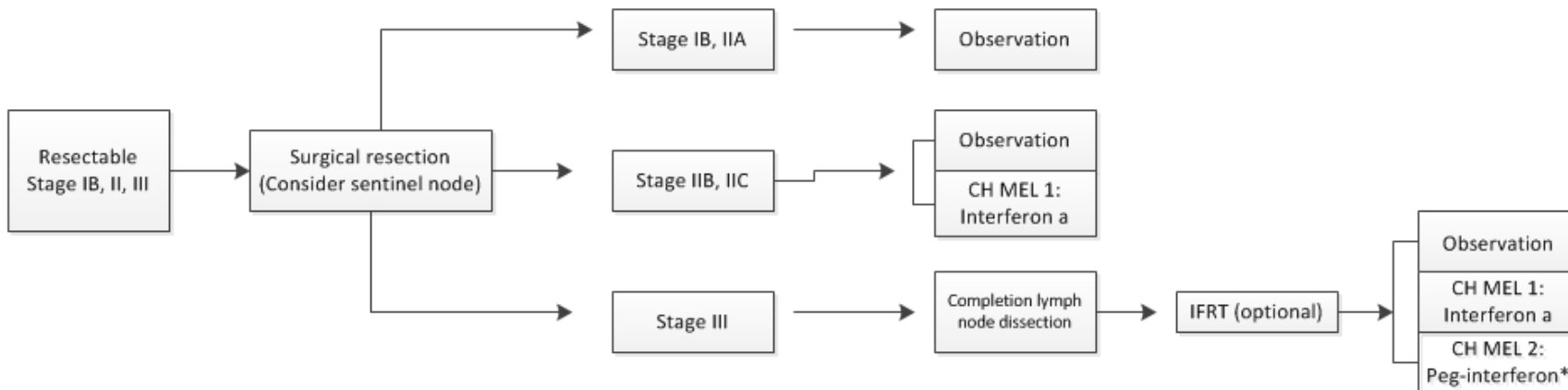
Optional diagnostic tests:

- LDH (Stage IV)

Stage 0-1A:

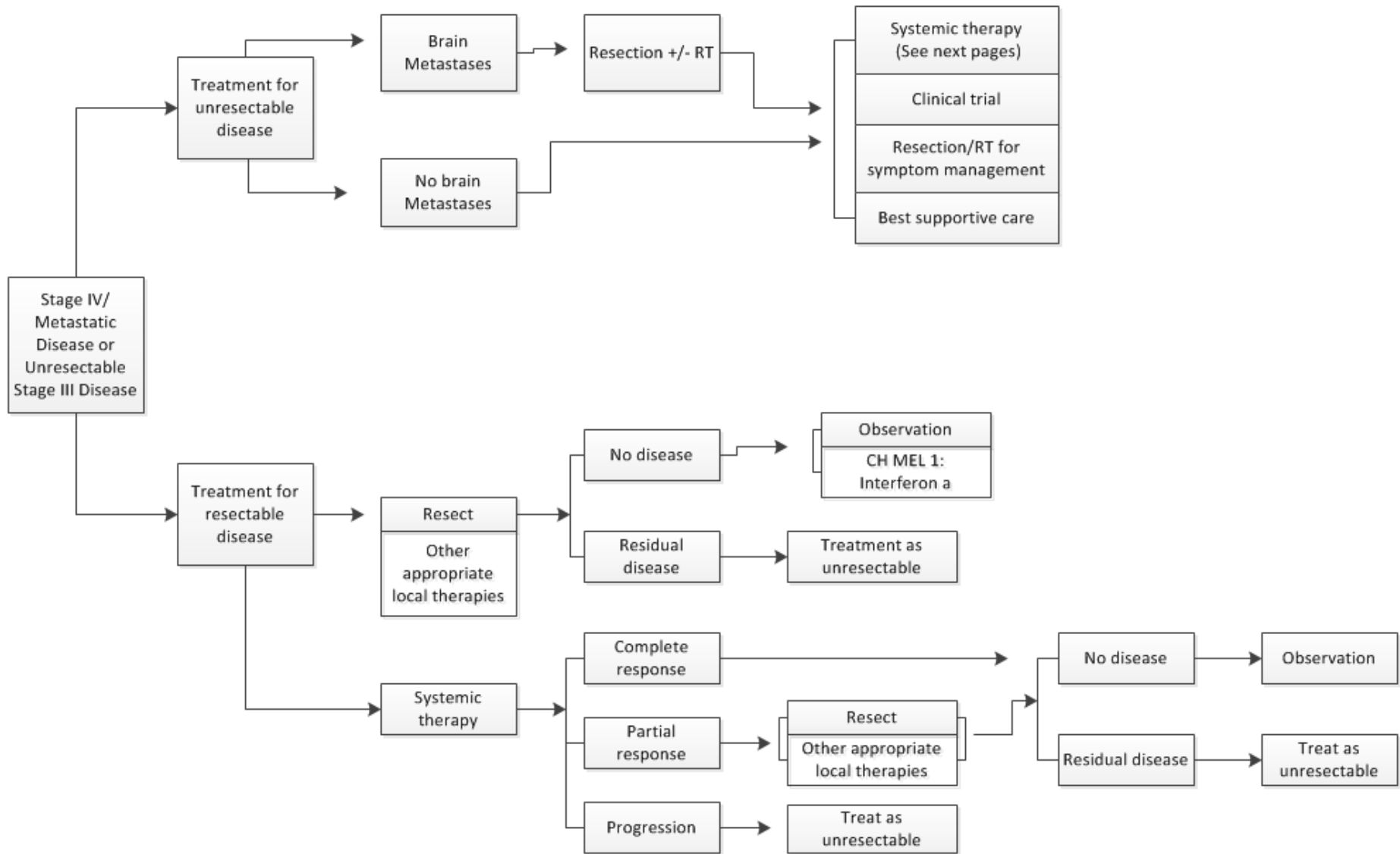


Stage IB, II, III:

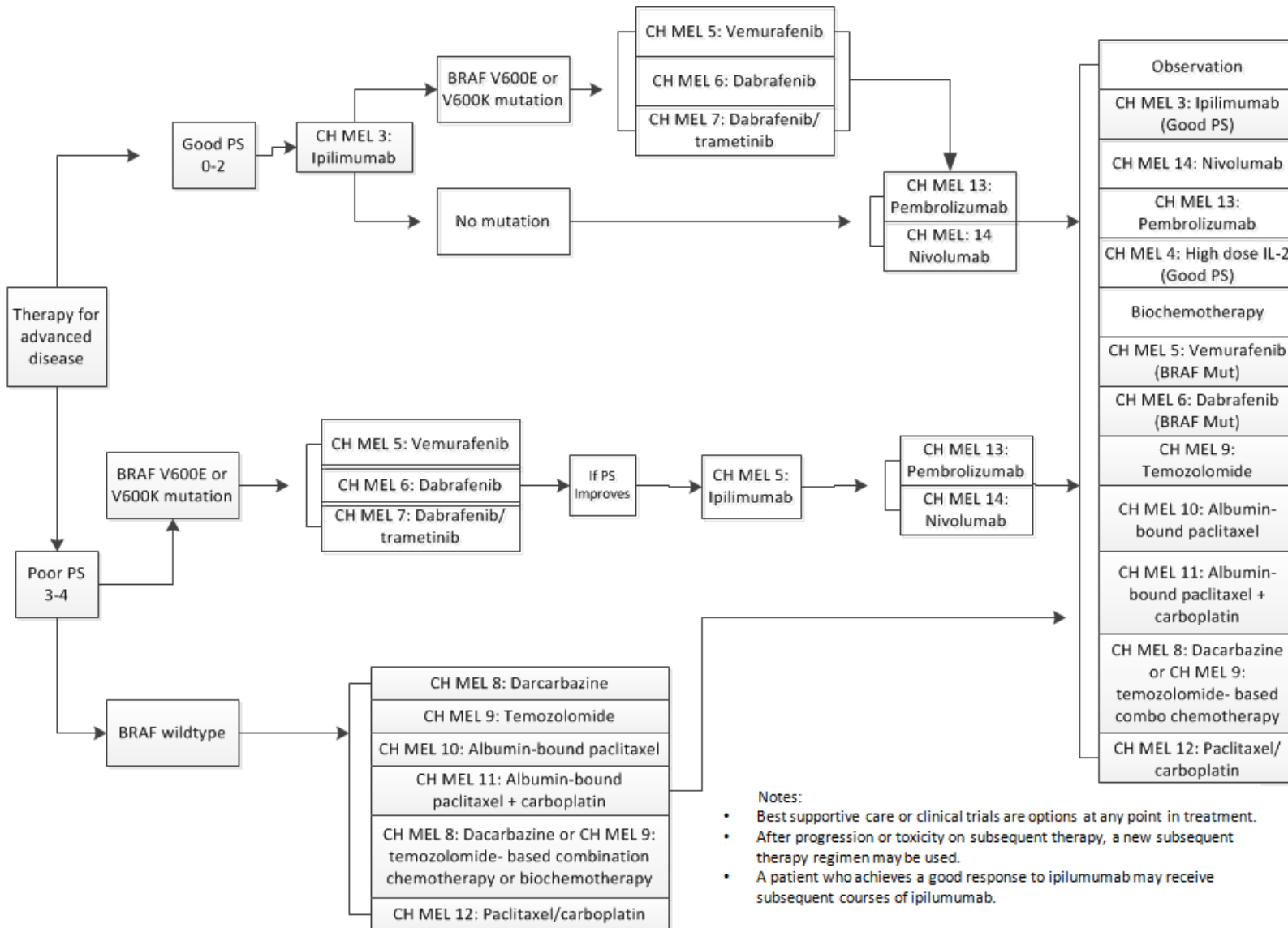


*Ulcerated N1 microscopic disease

Stage IV/Metastatic Disease or Unresectable Stage III Disease:



Advanced Disease



Melanoma Regimens

CH MEL 1: Interferon α

20 million IU/m² IV for 5 consecutive days per week for 28 days; followed by 10 million IU/m² SQ three times/week for 48 weeks

CH MEL 2: Peg-interferon

6mcg/kg SQ weekly for 8 doses, Followed by 3mcg/kg weekly for up to 5 years

CH MEL 3: Ipilimumab

3mg/kg day 1 q 21 days X 4 cycles

CH MEL 4: High Dose IL-2

600,000-720,000 IU/kg every 8 hours days 1-5 & 15-19
Repeat cycle in 6-12 week intervals

CH MEL 5: Vemurafenib

960mg po bid

CH MEL 6: Dabrafenib

150mg po bid

CH MEL 7: Dabrafenib + trametinib

Dabrafenib 150mg PO BID + trametinib 2mg PO daily

CH MEL 8: Dacarbazine

250mg/m² days 1-5 q 21 days] or 850mg/m² d 1 every 21 days

CH MEL 9: Temozolomide

150mg/m² po daily days 1-5 every 28 days; increase to 200mg/m² if tolerated

CH MEL 10: Albumin-bound paclitaxel

150mg/m² d 1, 8, 15 q 28 days

CH MEL 11: Albumin-bound paclitaxel + carboplatin

Albumin-bound paclitaxel 100mg/m² and carbo AUC 2 days 1, 8, 15 every 28 days

CH MEL 12: Paclitaxel + carboplatin

Carbo AUC 6 d1 and paclitaxel 225mg/m² d1 every 21 days

OR:

paclitaxel 100mg/m² and carboplatin AUC 2 days 1, 8, 15 every 28 days

CH MEL 13: Pembrolizumab

Pembrolizumab 2mg/kg IV every 3 weeks. Given until progression or no longer tolerated.

CH MEL 14: Nivolumab

Nivolumab 3mg/kg IV every 2 weeks. Continue until progression.

- For next call: Check on updates to Nivolumab + Ipilimumab trial