

COME HOME NSCLC Pathway, v6 January 2015

Required Structured Data:

- Stage
- Staging Components
- Staging Date
- Performance Status
- Histology
- Treatment Type
- Treatment Intent

Quality Measure(s):

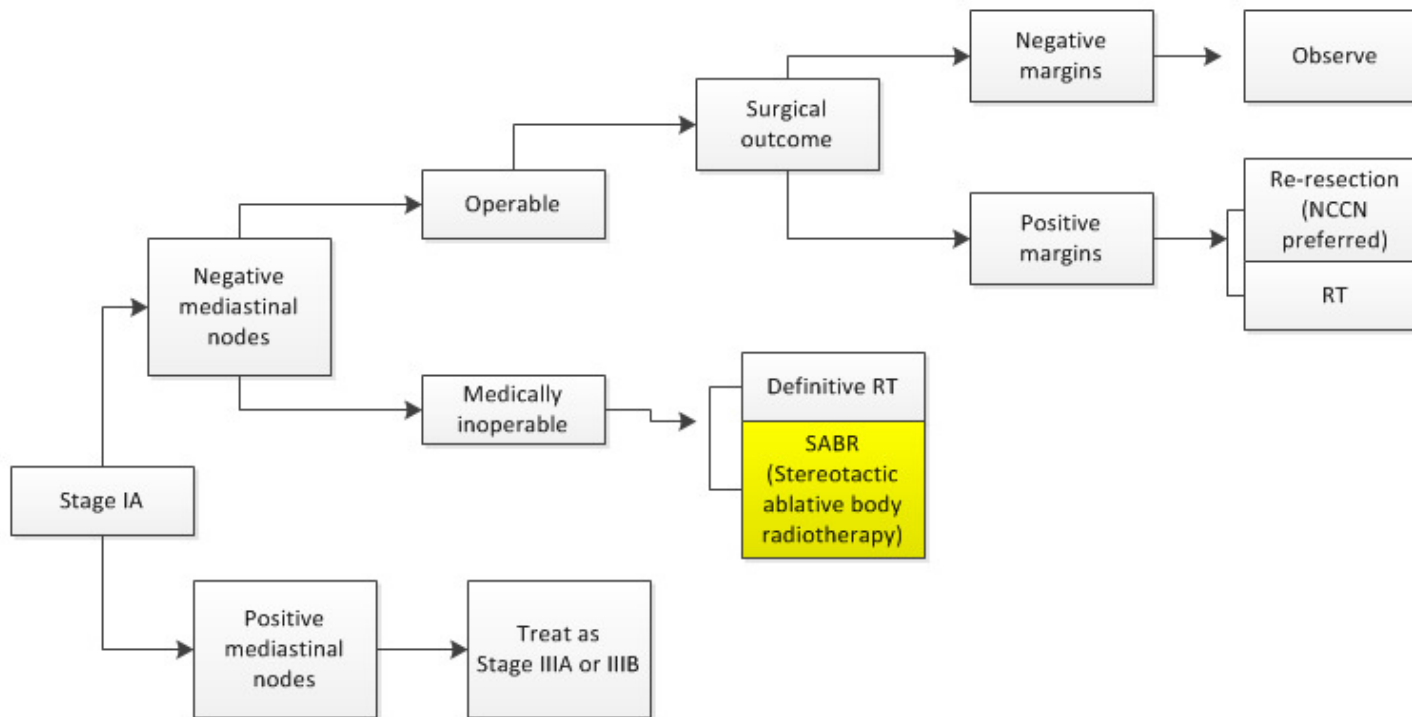
- Staging (clinical or pathologic) entered within one month (31 days) of first visit.

Diagnostic workup

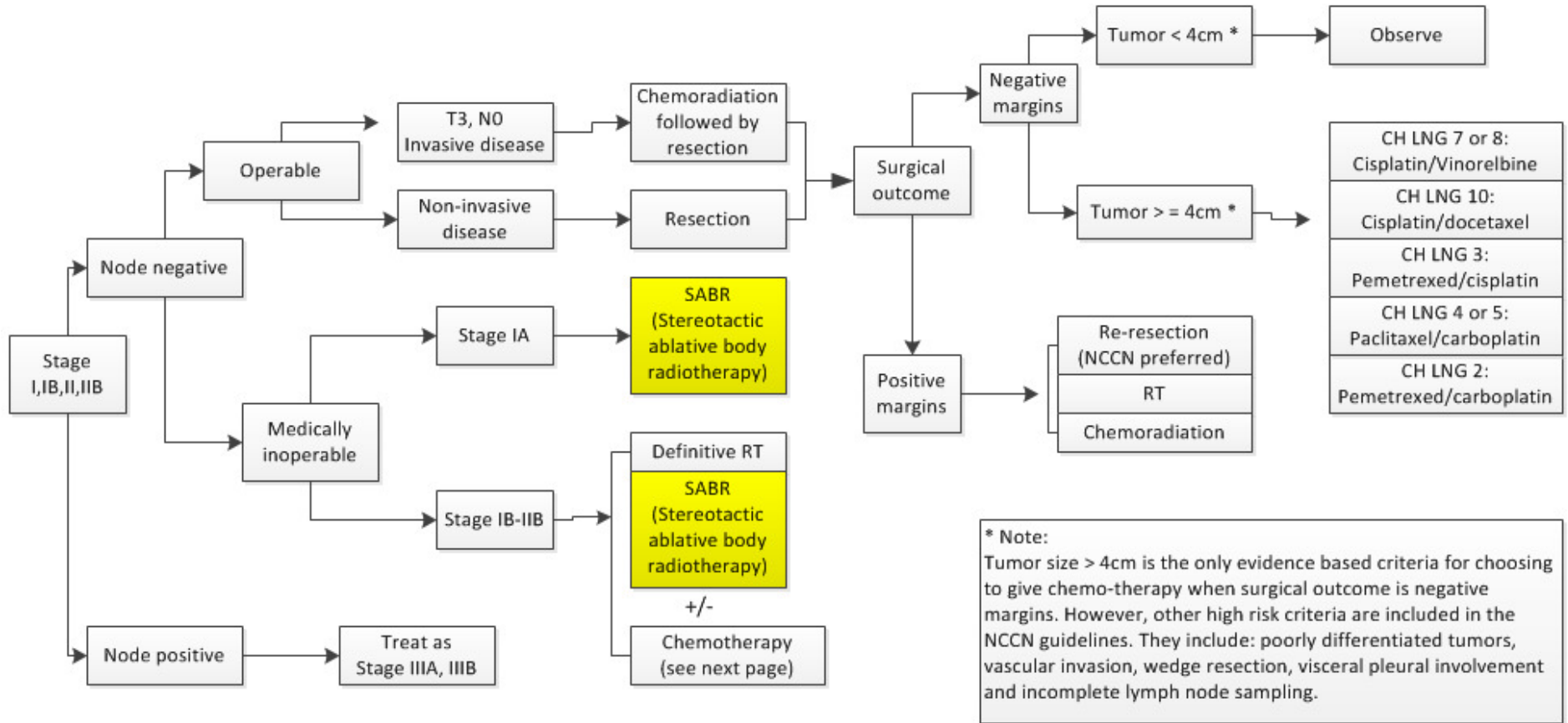
- Pathology Review (all patients)
- History and physical at first visit and every visit while on chemo (all patients)
- Performance status at first visit and every visit while on chemo (all patients)
- CT chest and upper abdomen, including adrenals within one month of first visit (all patients)
- CBC, platelets, chemistry profile within one week of first visit, monthly while on treatment (all patients)
- Bronchoscopy within one month of first visit (all patients)
- Pathologic mediastinal lymph node evaluation within one month of first visit (required for stage I and II, optional for stage III, unnecessary for stage IV)
- PET/CT scan within one month of first visit (required for stage I-III)
- Brain MRI or CT with contrast within one month of first visit (required for stage IB or greater)
- MRI of spine & thoracic inlet (optional)
- Thoracentesis (when clinically indicated)

- ALK & EGFR testing, conducted as part of a multiplex/next-generation sequencing assay when appropriate (Relapse/metastatic for nonsquamous; if squamous: never smokers or small biopsy specimens or mixed histology)

Clinical Stage IA (T1ab, N0):



Clinical Stage IB (peripheral T2a, N0), Stage I (central T1ab-T2a, N0), Stage II (T1ab-T2ab, N0), Stage IIB (T3, N0)



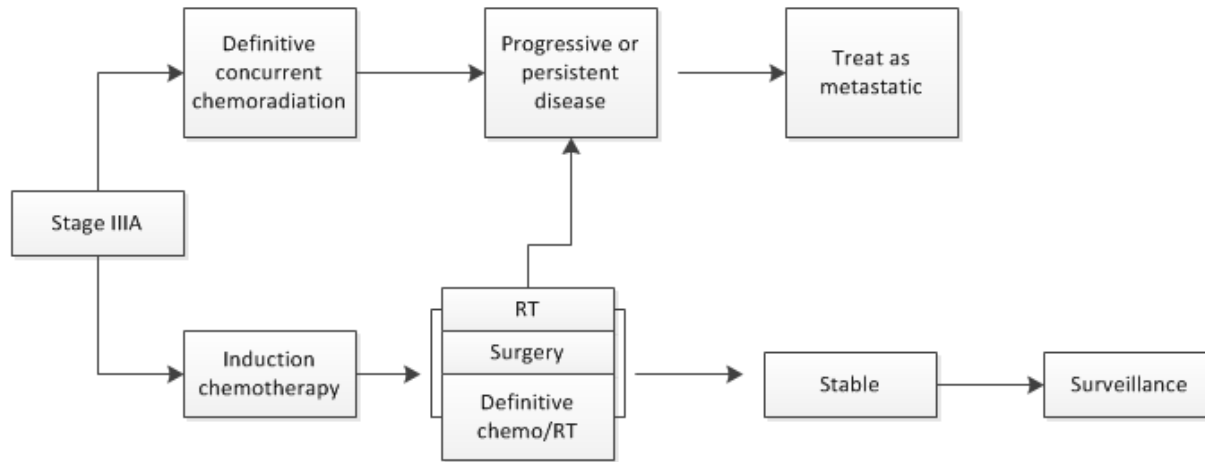
Chemotherapy Regimens used with radiation therapy (Stage I-II)**Concurrent Chemotherapy/RT Regimens:***

- CH LNG 1: Cisplatin 50mg/m² on days 1, 8, 29, and 36; etoposide 50mg/m² on days 1-5, 29-33; concurrent thoracic RT (NCCN preferred)
- CH LNG 2: Carboplatin AUC 5 on day 1, pemetrexed 500mg/m² every 21 days for 4 cycles; concurrent thoracic RT (NCCN note: nonsquamous)
- CH LNG 3: Cisplatin 75mg/m² on day 1, pemetrexed 500mg/m² every 21 days for 3 cycles; concurrent thoracic RT (NCCN note: nonsquamous)
- CH LNG 5: Paclitaxel 45-50mg/m² weekly; carboplatin AUC 2, concurrent thoracic RT ***Sequential Chemotherapy/RT Regimens:***
- CH LNG 6: Cisplatin 100mg/m² on days 1, 29; vinblastine 5mg/m² weekly on days 1, 8, 15, 22, 29; followed by RT
- CH LNG 14: Paclitaxel 200mg/m² every 3 weeks over 3 hours, 2 cycles; carboplatin AUC 6, 2 cycles; followed by thoracic RT
- CH LNG 4: Paclitaxel 175-200mg/m² every 3 weeks over 3 hours, 2 cycles; carboplatin AUC 6, 2 cycles; followed by thoracic RT
- CH LNG 5: Paclitaxel 45-50mg/m² weekly; carboplatin AUC 2, followed by thoracic RT

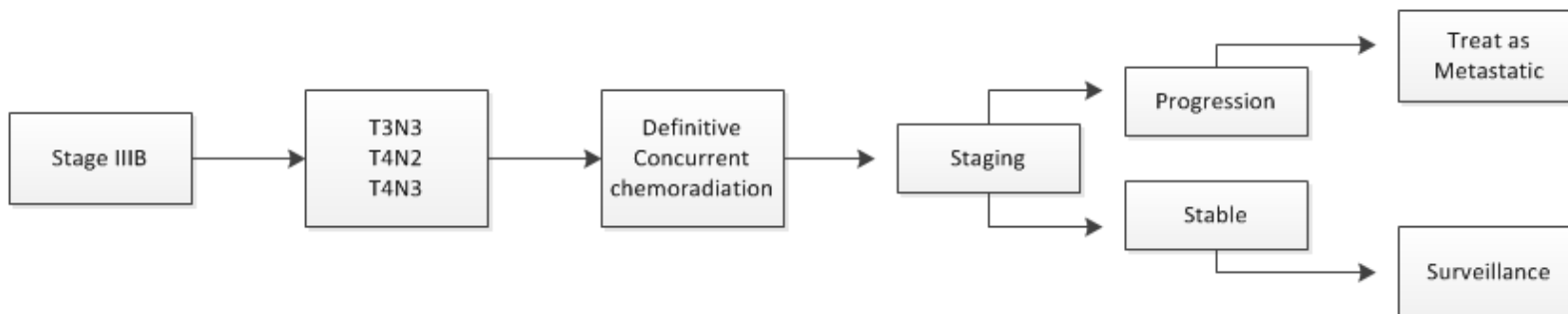
CT scans every 4 months for first 2 years, every 6 months for years 3-5, then yearly, PET not indicated

Radiation dose: 5500 to 6500 rads

Stage IIIA:



Stage IIIB:



Chemotherapy regimens for neoadjuvant and adjuvant therapy

- CH LNG 8: Cisplatin 50 mg/m² days 1 and 8; vinorelbine 25 mg/m² days 1, 8, 15, 22, every 28 days for 4 cycles
- CH LNG 7: Cisplatin 75-80 mg/m² on day 1; vinorelbine 25-30 mg/m² days 1 + 8; every 21 days for 4 cycles
- CH LNG 9: Cisplatin 75 mg/m² on day 1; gemcitabine 1250 mg/m² on days 1, 8, every 21 days for 4 cycles
- CH LNG 10: Cisplatin 75 mg/m²; docetaxel 75 mg/m² every 21 days for 4 cycles
- CH LNG 3: Pemetrexed 500 mg/m² on day 1; cisplatin 75 mg/m² on day 1 for adenocarcinoma and large cell carcinoma and NSCLC NOS (without specific histologic subtype) every 21 days for 4 cycles
- CH LNG 4: Paclitaxel 175 - 200 mg/m² on day 1, carboplatin AUC 6 on day 1, every 21 days
- CH LNG 11: Paclitaxel 75-80 mg/m² weekly
- CH LNG 5: Paclitaxel 45-50mg/m² weekly; carboplatin AUC 2
- CH LNG 12: Docetaxel 75-80mg/m², carboplatin AUC 5-6 on day 1, every 21 days

***Chemotherapy Regimens used for chemoradiation (Stage IIIA/B)**

Concurrent Chemotherapy/RT Regimens (Good Performance Status):

- CH LNG 11: Cisplatin 50mg/m² on days 1, 8, 29, and 36; etoposide 50mg/m² on days 1-5, 29-33; concurrent thoracic RT (NCCN preferred)
- CH LNG 3: Cisplatin 75mg/m² on day 1, pemetrexed 500mg/m² every 21 days for 3 cycles; concurrent thoracic RT (NCCN note: nonsquamous)
- CH LNG 5: Paclitaxel 45-50mg/m² weekly; carboplatin AUC 2, concurrent thoracic RT

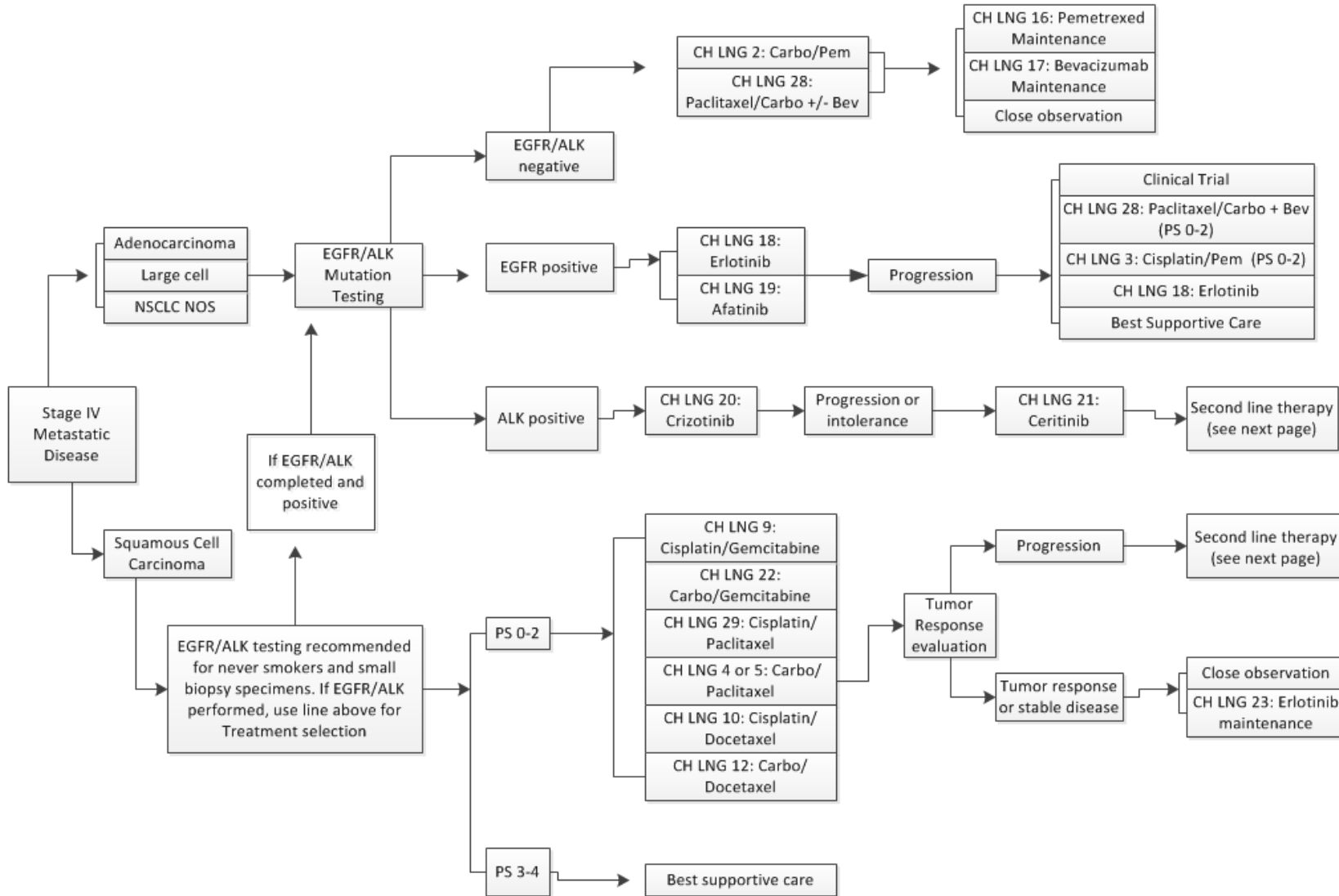
Sequential Chemotherapy/RT Regimens (Poor Performance Status):

- CH LNG 6: Cisplatin 100mg/m² on days 1, 29; vinblastine 5mg/m² weekly on days 1, 8, 15, 22, 29; followed by RT
- CH LNG 4: Paclitaxel 175-200mg/m² every 3 weeks over 3 hours, 2 cycles; carboplatin AUC 6, 2 cycles; followed by thoracic RT

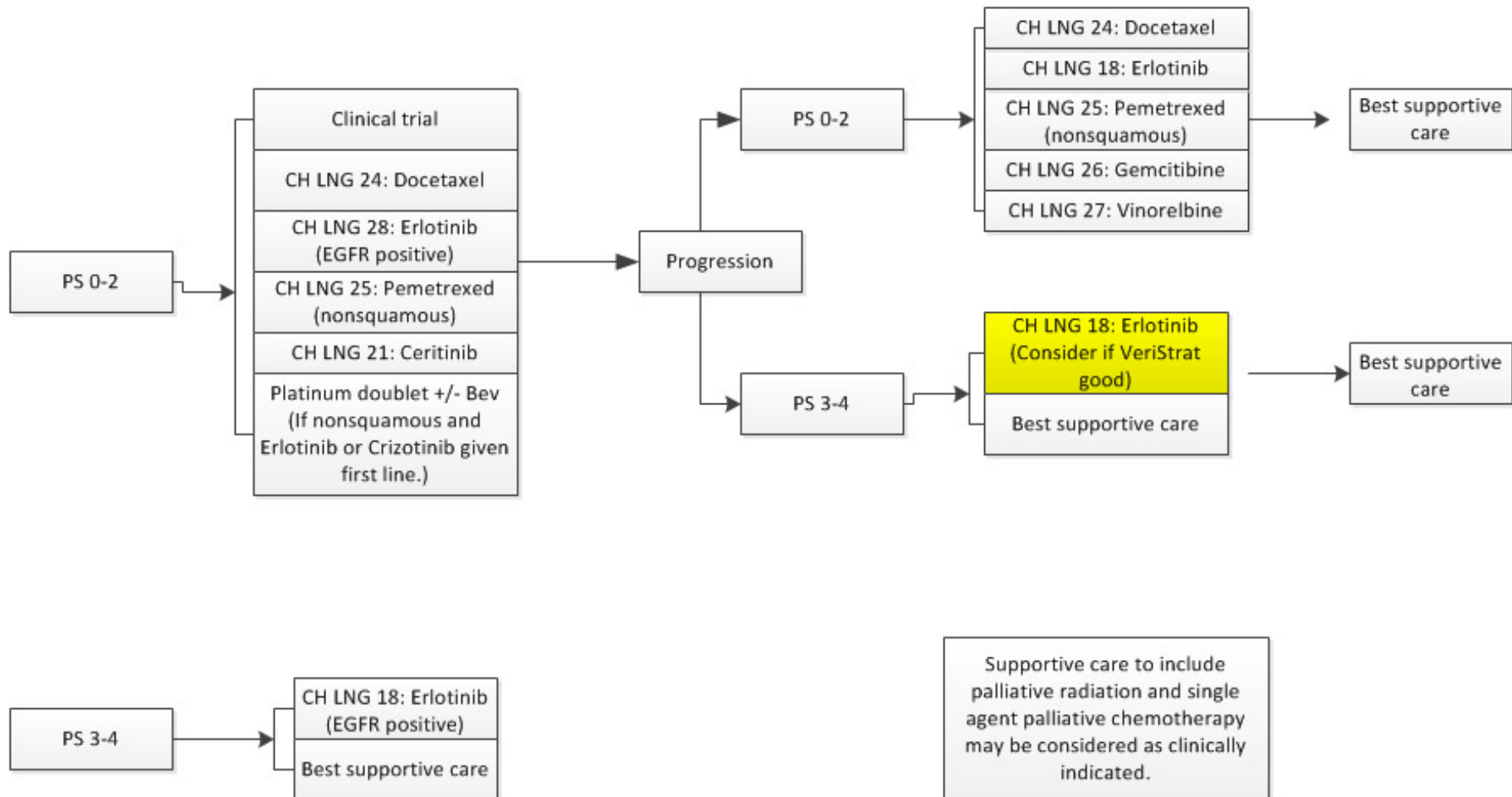
Concurrent Chemotherapy/RT followed by chemotherapy (Good Performance Status):

- CH LNG 1: Cisplatin 50mg/m² on days 1, 8, 29, and 36; etoposide 50mg/m² on days 1-5, 29-33; concurrent thoracic RT followed by cisplatin 50mg/m² and etoposide 50mg/m² x 2 additional cycles
- CH LNG 14: Paclitaxel 45-50mg/m² weekly; carboplatin AUC 2, concurrent thoracic RT followed by paclitaxel 175-200mg/m² and carboplatin AUC 6 x 2 cycles
- CH LNG 2: Carboplatin AUC 5 on day 1, pemetrexed 500mg/m² every 21 days for 4 cycles; concurrent thoracic RT (NCCN note: nonsquamous)

Metastatic Disease:



Second Line Therapy:



CH LNG 1: Cis + etoposide

Cisplatin 50mg/m² on days 1, 8, 29, and 36;
etoposide 50mg/m² on days 1-5, 29-33

CH LNG 2: Carbo + pem

Carboplatin AUC 5 on day 1, pemetrexed
500mg/m² every 21 days for 4 cycles

CH LNG 3: Cis + pem

Cisplatin 75mg/m² on day 1, pemetrexed
500mg/m² every 21 days for 3 cycles

CH LNG 4: Paclitaxel + carbo

Paclitaxel 175mg-200mg/m² every 3 weeks over
3 hours, 2 cycles; carboplatin AUC 6

CH LNG 5: Paclitaxel + carbo weekly

Paclitaxel 50mg/m² weekly; carboplatin AUC 2

CH LNG 6: Cis + vinblastine

Cisplatin 100mg/m² on days 1, 29; vinblastine
5mg/m² weekly on days 1, 8, 15, 22, 29

CH LNG 7: Cis + vinorelbine

Cisplatin 80 mg/m² on day 1; vinorelbine 25-30
mg/m² days 1 + 8; every 21 days for 4 cycles

CH LNG 8: Cis + vinorelbine weekly

Cisplatin 50 mg/m² days 1 and 8; vinorelbine 25
mg/m² days 1, 8, 15, 22, every 28 days for 4
cycles

CH LNG 9: Cis + gem

Cisplatin 75 mg/m² on day 1; gemcitabine 1250
mg/m² on days 1, 8, every 21 days for 4 cycles

CH LNG 10: Cis + docetaxel

Cisplatin 75 mg/m²; docetaxel 75 mg/m² every
21 days for 4 cycles

CH LNG 11: Paclitaxel weekly

Paclitaxel 80 mg/m² weekly

CH LNG 12: Docetaxel + carbo

Docetaxel 75-80mg/m², carboplatin AUC 5-6 on
day 1, every 21 days

CH LNG 13: Cis+etoposide – RT – cis+etoposide

Cisplatin 50mg/m² on days 1, 8, 29, and 36;
etoposide 50mg/m² on days 1-5, 29-33;
concurrent thoracic RT followed by cisplatin
50mg/m² and etoposide 50mg/m² x 2 additional
cycles

CH LNG 14: Paclitaxel + carbo – RT – paclitaxel + carbo

Paclitaxel 45-50mg/m² weekly; carboplatin AUC
2, concurrent thoracic RT followed by paclitaxel
175-200mg/m² and carboplatin AUC 6 x 2 cycles

CH LNG 15: Cisplatin – REMOVED

~~Cisplatin 60 – 100 mg/m² on day 1
Repeated every 3 weeks~~

CH LNG 16: Pemetrexed maintenance

Pemetrexed 500 mg/m² on day 1
Repeated every 3 weeks

CH LNG 17: Bevacizumab maintenance

Bevacizumab 7.5 mg/kg day 1
Repeated every 3 weeks

CH LNG 18: Erlotinib

Erlotinib 150 mg daily

CH LNG 19: Afantinib

Afantinib 40 mg PO Daily

CH LNG 20: Crizotinib

Crizotinib 250 mg PO q12hr

CH LNG 21: Ceritinib

Ceritinib 750 mg PO qDay

CH LNG 22: Carbo + gem

Carboplatin AUC 5-6 on day 1; gemcitabine 1000-1250 mg/m² on days 1, 8, every 21-28 days for 4 cycles

CH LNG 23: Erlotinib maintenance

Erlotinib 150 mg daily

CH LNG 24: Docetaxel

Docetaxel 75-80mg/m² on day 1, every 21 days

CH LNG 25: Pemetrexed

Pemetrexed 500mg/m² every 21 day

CH LNG 26: Gemcitabine

Gemcitabine 1000-1250 mg/m² on days 1, 8, every 21 days for 4 cycles

CH LNG 27: Vinorelbine

Vinorelbine 25 mg/m² weekly

CH LNG 28: Carboplatin + paclitaxel +/- Bev

Carboplatin AUC 6 IV day 1 every 3 weeks x 6 cycles; Paclitaxel 200 mg/m² IV day 1 every 3 weeks x 6 cycles; Bevacizumab 15 mg/kg IV day 1 every 3 weeks until disease progression

CH LNG 29: Cisplatin + paclitaxel

Cisplatin 70mg/m² IV day1
Paclitaxel 175mg/m² IV day 1
Every 21 days for 4 cycles