

COME HOME Rectal Cancer Pathway V8, April 2015

Diagnostic Workup:

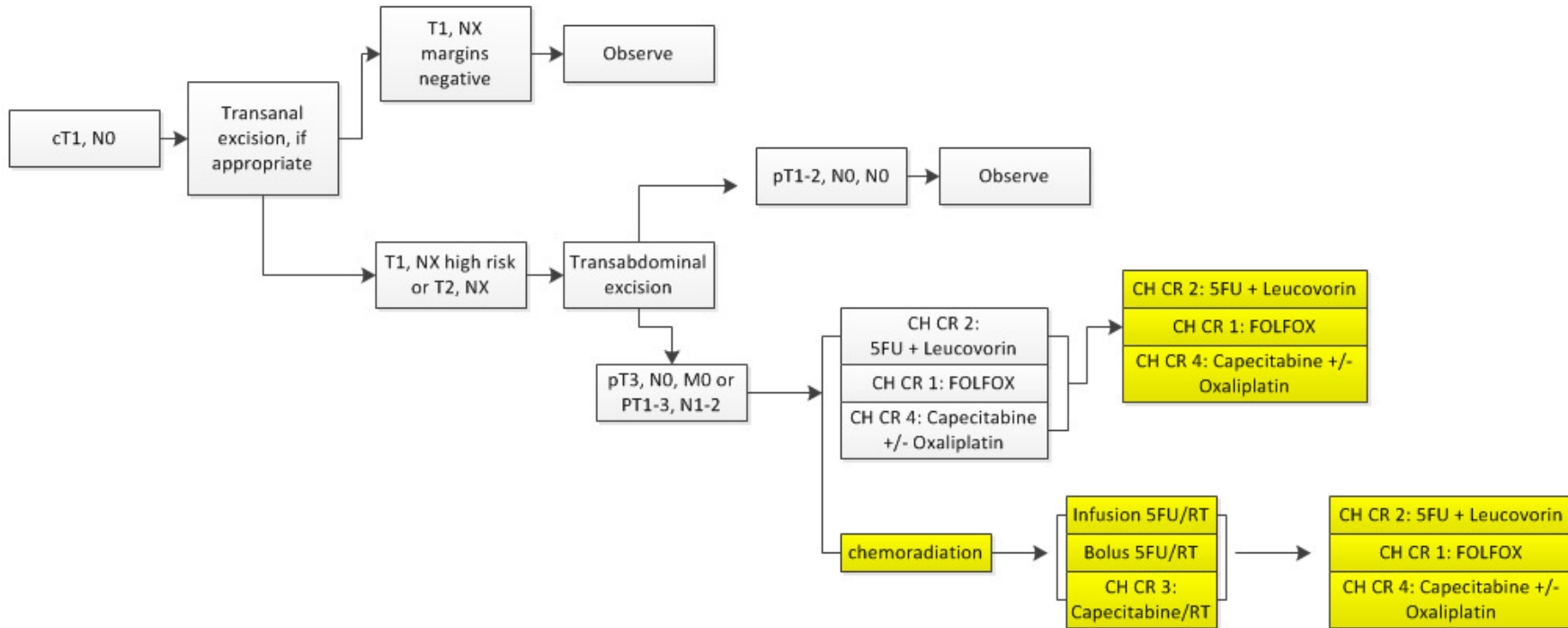
- | | |
|---|---|
| <ul style="list-style-type: none"> • Pathology Review • H&P • Biopsy • Colonoscopy • CEA • Chest/Abdominal/Pelvic CT • KRAS • BRAF • NRAS • PET-CT • Family history • MSI testing | <p>All patients</p> <p>All patients</p> <p>All patients</p> <p>All patients</p> <p>All Patients</p> <p>All Patients</p> <p>Patients with Stage 4</p> <p>Patients with Stage 4</p> <p>Patients with Stage 4</p> <p>Patients with potentially resectable disease</p> <p>All Patients</p> <p>Patients with stage II disease or meeting Bethesda criteria</p> |
|---|---|

Bethesda Criteria:

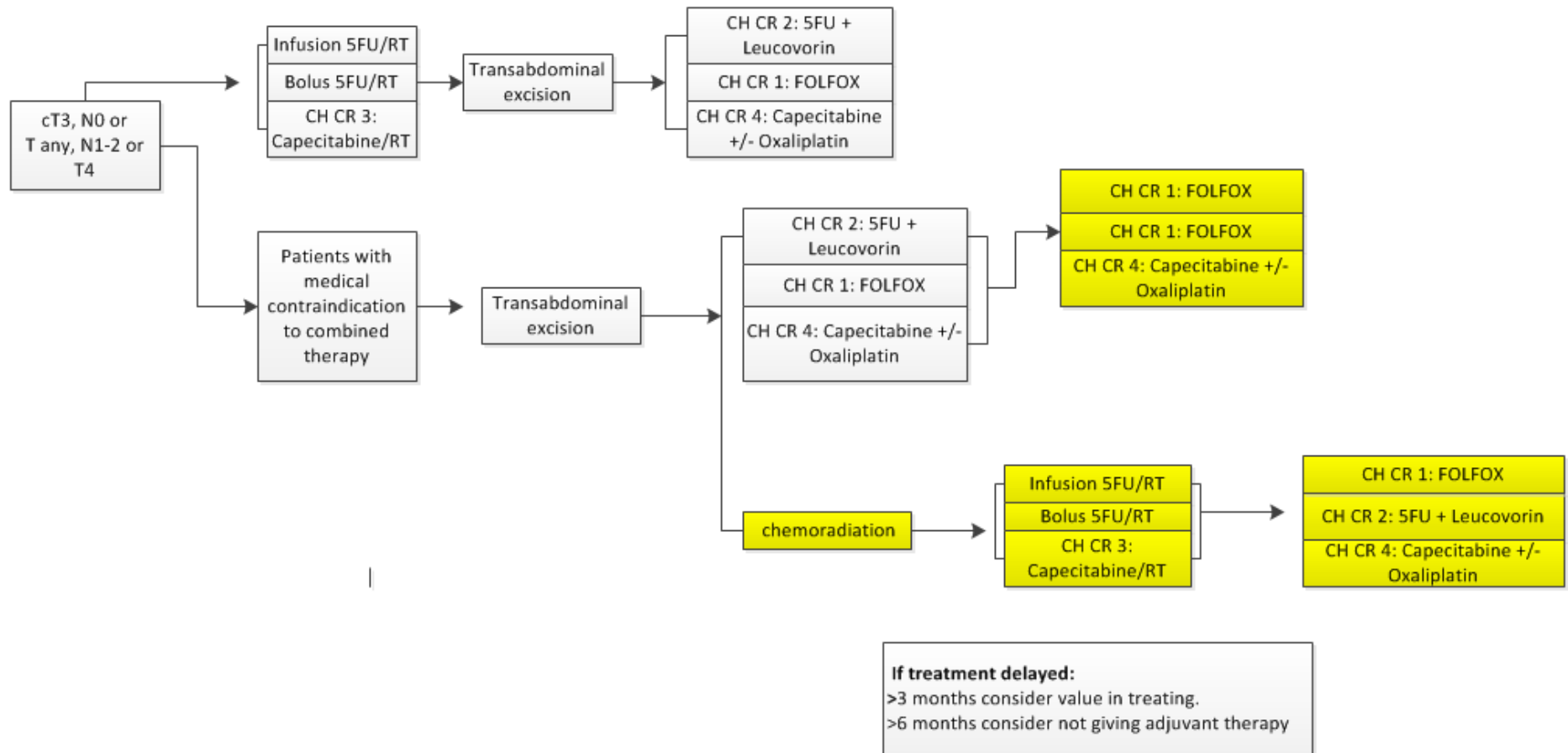
- Age < 50 at diagnosis
- Pt has synchronous or metachronous colorectal or other HNPCC-related tumors (colorectal, endometrial, stomach, ovarian, pancreas, bladder, ureter and renal pelvis, biliary tract, brain (usually glioblastoma as seen in Turcot Syndrome), sebaceous gland adenomas and keratoacanthomas in Muir-Torre syndrome, and carcinoma of the small bowel)
- Pt has colorectal cancer and one or more first-degree relatives was diagnosed with HNPCC-related tumor before the age of 50.
- Pt has colorectal cancer and two or more first degree relatives were diagnosed with HNPCC-related tumor at any age

Note: In the case of a Leucovorin shortage, Levoleucovorin can be used at half the Leucovorin dose

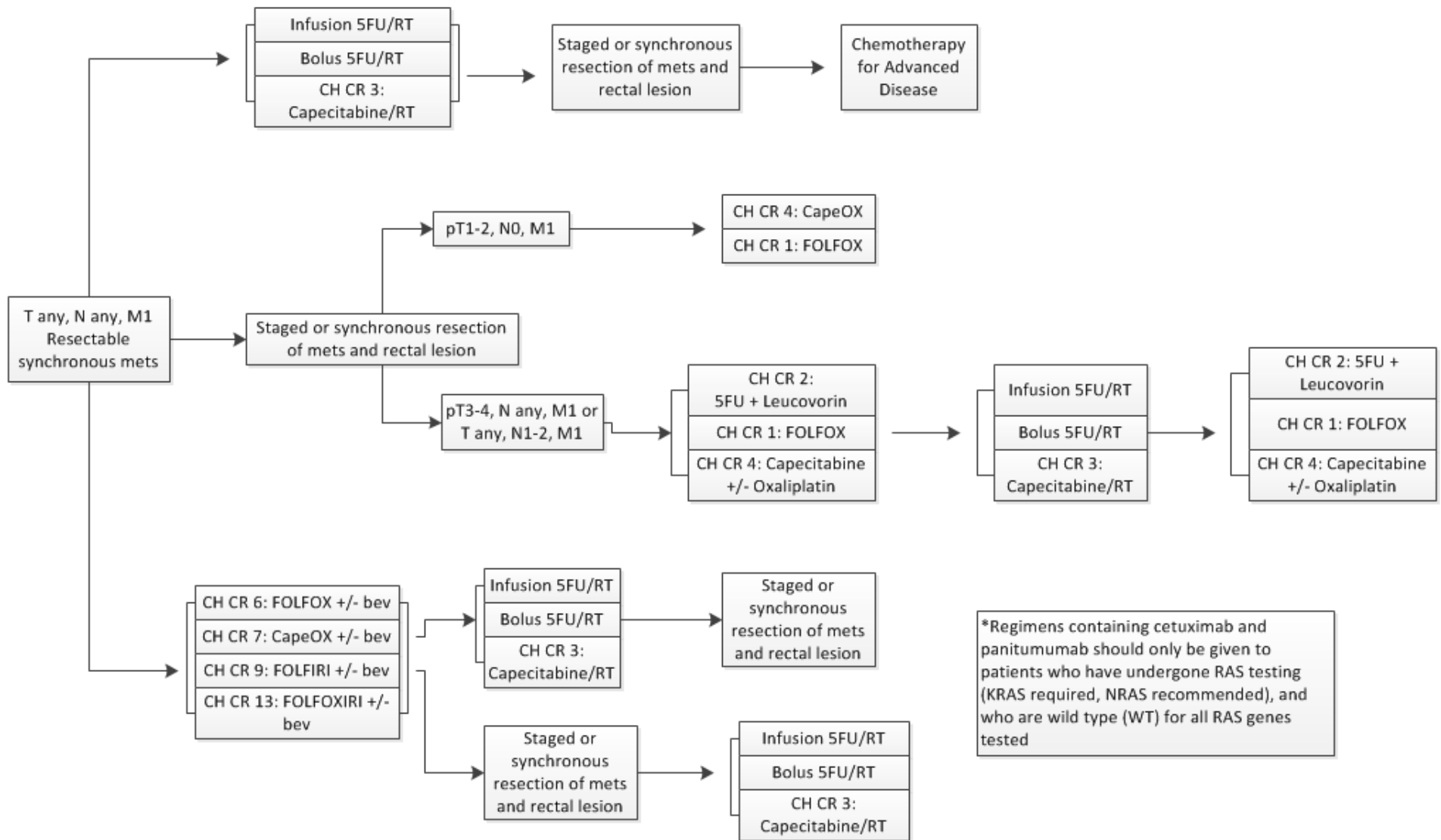
cT1, N0



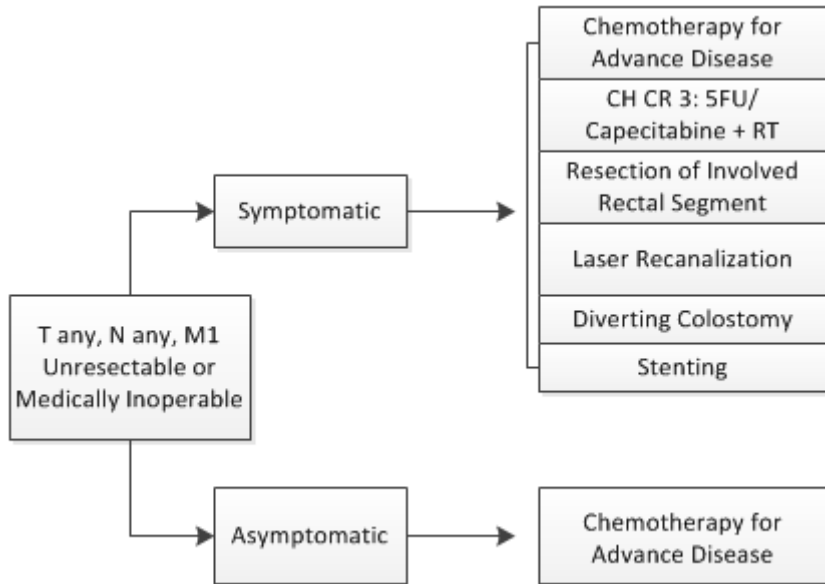
cT3, N0 or T any, N1-2 or T4



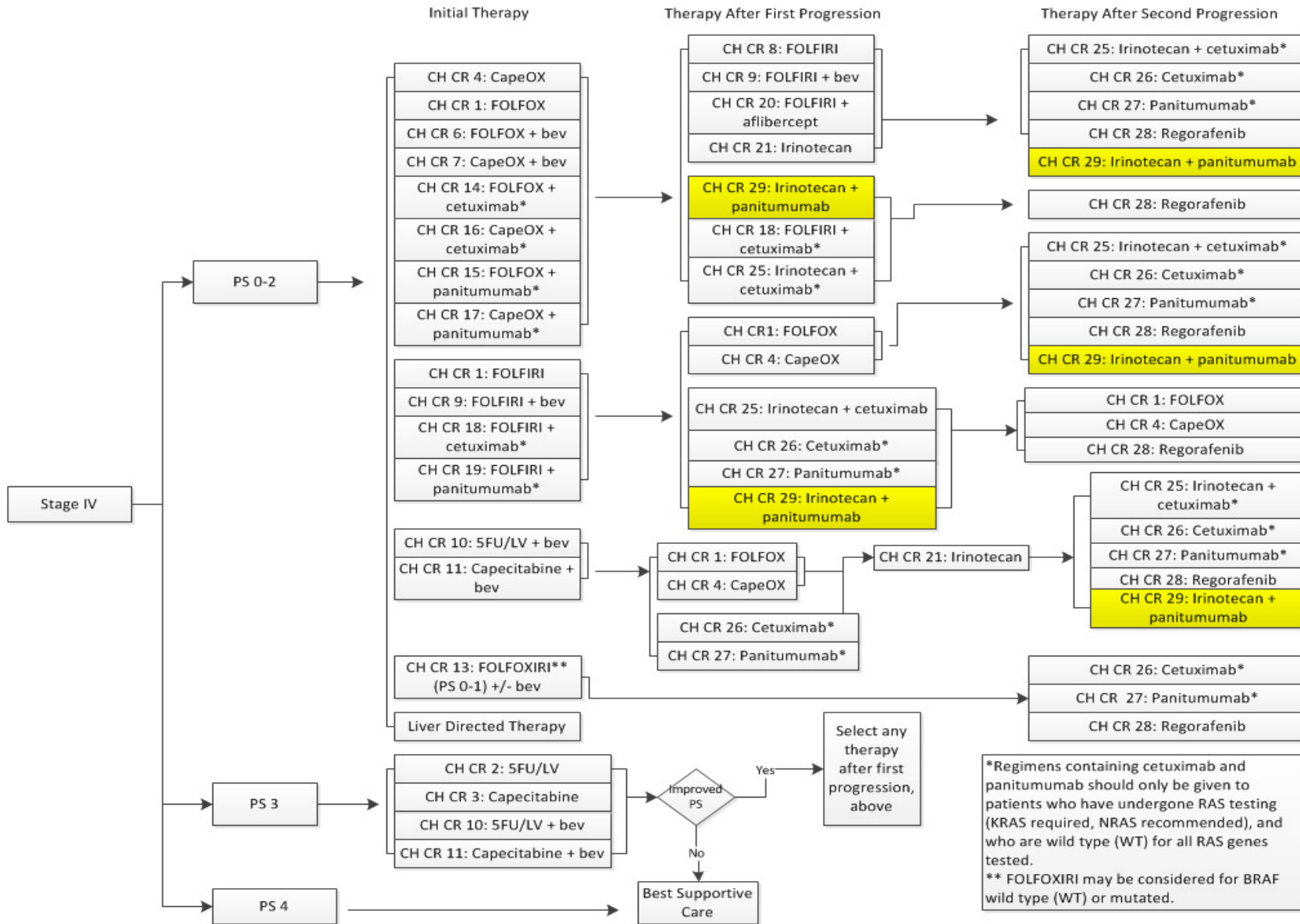
T any, N any, M1, resectable synchronous mets



T any, N any, M1, unresectable synchronous metastases or medically inoperable



Therapy for Advanced Disease



CH CR 1: FOLFOX

Oxaliplatin 85 mg/m² IV day 1
 Leucovorin 400 mg/m² IV day 1
 5FU 400 mg/m² IV bolus on day 1 then 1200 mg/m²/day x 2 days CIVI
 Repeat every 2 weeks

CH CR 2: 5FU/LV

Leucovorin 500 mg/m² IV days 1, 8, 15, 22, 29 and 36
 5-FU 500 mg/m² IV bolus 1 hour after start of leucovorin days 1, 8, 15, 22, 29, 36
 Repeat every 8 weeks

CH CR 3: Capecitabine

850-1250 mg/m² PO twice daily, days 1-14
 Repeat every 3 weeks

CH CR 4: CapeOX

Oxaliplatin 130 mg/m² IV over 2 hours day 1
 Capecitabine 850-1000 mg/m² twice daily PO for 14 days
 Repeat every 3 weeks

~~**CH CR 5: FLOX**~~

~~5-FU 500mg/m² IV bolus weekly for 6 cycles.
 Leucovorin 500mg/m² IV weekly for 6 cycles
 Each 8 week cycle x3 with oxaliplatin 85mg/m² IV administered on weeks 1,3 and 5 of each 8 week cycle x3~~

CH CR 6: FOLFOX + bev

Oxaliplatin 85 mg/m² IV day 1
 Leucovorin 400 mg/m² IV day 1
 5FU 400 mg/m² IV bolus on day 1 then 1200 mg/m²/day x 2 days CIVI
 Bevacizumab 5 mg/kg IV, day 1
 Repeat every 2 weeks

CH CR 7: CapeOX + bev

Oxaliplatin 130 mg/m² IV over 2 hours day 1
 Capecitabine 850-1000 mg/m² twice daily PO for 14 days
 Bevacizumab 7.5 mg/kg IV day 1
 Repeat every 3 weeks

CH CR 8: FOLFIRI

Irinotecan 180 mg/m² IV day 1
Leucovorin 400 mg/m² IV day 1
5-FU 400 mg/m² IV bolus day 1, then 1200 mg/m²/day x 2 days CIVI
Repeat every 2 weeks

CH CR 9: FOLFIRI + bev

Irinotecan 180 mg/m² IV day 1
Leucovorin 400 mg/m² IV day 1
5-FU 400 mg/m² IV bolus day 1, then 1200 mg/m²/day x 2 days CIVI
Bevacizumab 5 mg/kg IV, day 1
Repeat every 2 weeks

CH CR 10: 5FU/LV + bev

Leucovorin 500 mg/m² IV days 1, 8, 15, 22, 29 and 36
5-FU 500 mg/m² IV bolus 1 hour after start of leucovorin days 1, 8, 15, 22, 29, 36
Repeat every 8 weeks
Bevacizumab 5 mg/kg IV day 1
Repeat every 2 weeks

CH CR 11: Cape + bev

850-1250 mg/m² PO twice daily, days 1-14
Bevacizumab 7.5 mg/kg IV day 1
Repeat every 3 weeks

CH CR 12: FOLFOXIRI

Irinotecan 165 mg/m² IV day 1
Oxaliplatin 85 mg/m² day 1
Leucovorin 400 mg/m² day 1
5FU 1600 mg/m²/day x 2 days CIVI
Repeat every 2 weeks

CH CR 13: FOLFOXIRI + bev

Irinotecan 165 mg/m² IV day 1
Oxaliplatin 85 mg/m² day 1
Leucovorin 400 mg/m² day 1
5FU 1600 mg/m²/day x 2 days CIVI
Bevacizumab 5 mg/kg day 1
Repeat every 2 weeks

CH CR 14: FOLFOX + cetuximab

Oxaliplatin 85 mg/m² IV day 1
 Leucovorin 400 mg/m² IV day 1
 5FU 400 mg/m² IV bolus on day 1 then 1200 mg/m²/day x 2 days CIVI
 Panitumumab 6 mg/kg IV day 1
 Repeat every 2 weeks

CH CR 15: FOLFOX + panitumumab

Oxaliplatin 85 mg/m² IV day 1
 Leucovorin 400 mg/m² IV day 1
 5FU 400 mg/m² IV bolus on day 1 then 1200 mg/m²/day x 2 days CIVI
 Repeat every 2 weeks
 Cetuximab 400 mg/m² IV over 2 hours first infusion, then 250 mg/m² IV over 60 min weekly
 OR
 Cetuximab 500 mg/m² IV over 2 hours, day 1, every 2 weeks

CH CR 16: CapeOX + cetuximab

Oxaliplatin 130 mg/m² IV over 2 hours day 1
 Capecitabine 850-1000 mg/m² twice daily PO for 14 days
 Repeat every 3 weeks
 Cetuximab 400 mg/m² IV over 2 hours first infusion, then 250 mg/m² IV over 60 min weekly
 OR
 Cetuximab 500 mg/m² IV over 2 hours, day 1, every 2 weeks

CH CR 17: CapeOX + panitumumab

Oxaliplatin 130 mg/m² IV over 2 hours day 1
 Capecitabine 850-1000 mg/m² twice daily PO for 14 days
 Repeat every 3 weeks
 Panitumumab 6 mg/kg IV day 1
 Repeat every 2 weeks

CH CR 18: FOLFIRI + cetuximab

Irinotecan 180 mg/m² IV day 1
 Leucovorin 400 mg/m² IV day 1
 5-FU 400 mg/m² IV bolus day 1, then 1200 mg/m²/day x 2 days CIVI
 Repeat every 2 weeks
 Cetuximab 400 mg/m² IV over 2 hours first infusion, then 250 mg/m² IV over 60 min weekly
 OR
 Cetuximab 500 mg/m² IV over 2 hours, day 1, every 2 weeks

CH CR 19: FOLFIRI +panitumumab

Irinotecan 180 mg/m² IV day 1
 Leucovorin 400 mg/m² IV day 1
 5-FU 400 mg/m² IV bolus day 1, then 1200 mg/m²/day x 2 days CIVI
 Panitumumab 6 mg/kg IV day 1
 Repeat every 2 weeks

CH CR 20: FOLFIRI + aflibercept

Irinotecan 180 mg/m² IV day 1
 Leucovorin 400 mg/m² IV day 1
 5-FU 400 mg/m² IV bolus day 1, then 1200 mg/m²/day x 2 days CIVI
 Ziv-aflibercept 4 mg/kg IV
 Repeat every 2 weeks

CH CR 21: Irinotecan

Irinotecan 125 mg/m² IV days 1 and 8
 Repeat every 3 weeks

CH CR 22: FOLFOX then Irino

Oxaliplatin 85 mg/m² IV day 1
 Leucovorin 400 mg/m² IV day 1
 5FU 400 mg/m² IV bolus on day 1 then 1200 mg/m²/day x 2 days CIVI
 Repeat every 2 weeks
 Followed by (2-3 weeks):
 Irinotecan 125 mg/m² IV days 1 and 8
 Repeat every 3 weeks

CH CR 23: CapeOX then Irino

Oxaliplatin 130 mg/m² IV over 2 hours day 1
 Capecitabine 850-1000 mg/m² twice daily PO for 14 days
 Repeat every 3 weeks
 Followed by (2-3 weeks):
 Irinotecan 125 mg/m² IV days 1 and 8
 Repeat every 3 weeks

CH CR 24: Irinotecan + Oxaliplatin

Irinotecan 125 mg/m² IV days 1 and 8
 Oxaliplatin 130 mg/m² IV day 1
 Repeat every 3 weeks

CH CR 25: Irinotecan + cetuximab

Irinotecan 125 mg/m² IV days 1 and 8

Repeat every 3 weeks

Cetuximab 400 mg/m² first infusion, then 250 mg/m² IV weekly

OR

Cetuximab 500 mg/m² IV over 2 hours day 1, every 2 weeks

CH CR 26: Cetuximab

Cetuximab 400 mg/m² first infusion, then 250 mg/m² IV weekly

OR

Cetuximab 500 mg/m² IV over 2 hours day 1, every 2 weeks

CH CR 27: Panitumumab

Panitumumab 6 mg/kg IV day 1

Repeat every 2 weeks

CH CR 28: Regorafenib

Regorafenib 120-160 mg PO daily days 1-21

Repeat every 28 days

CH CR 29: Irinotecan + panitumumab

Irinotecan 125 mg/m² IV days 1 and 8

Repeat every 3 weeks

Or

Irinotecan 300–350mg/m² IV, day 1

Repeat cycle every 3 weeks.

Panitumumab 6mg/kg IV , day 1

repeat every 2 weeks